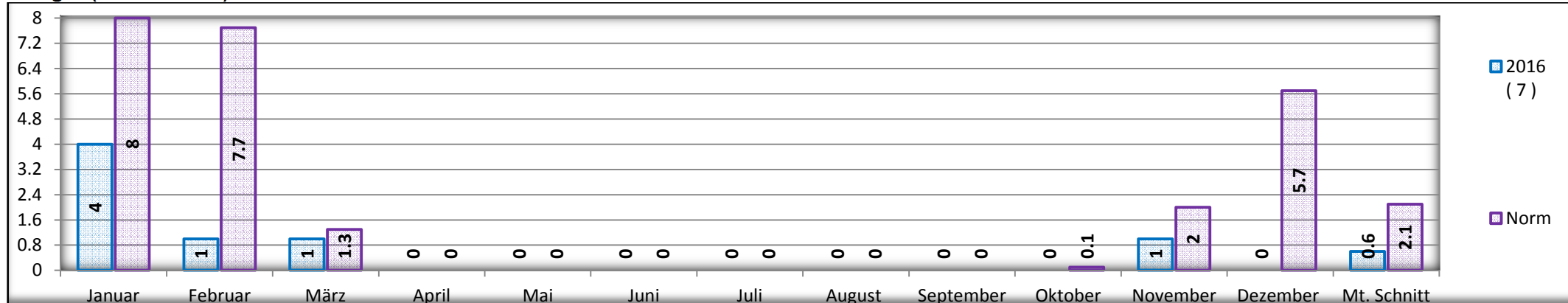
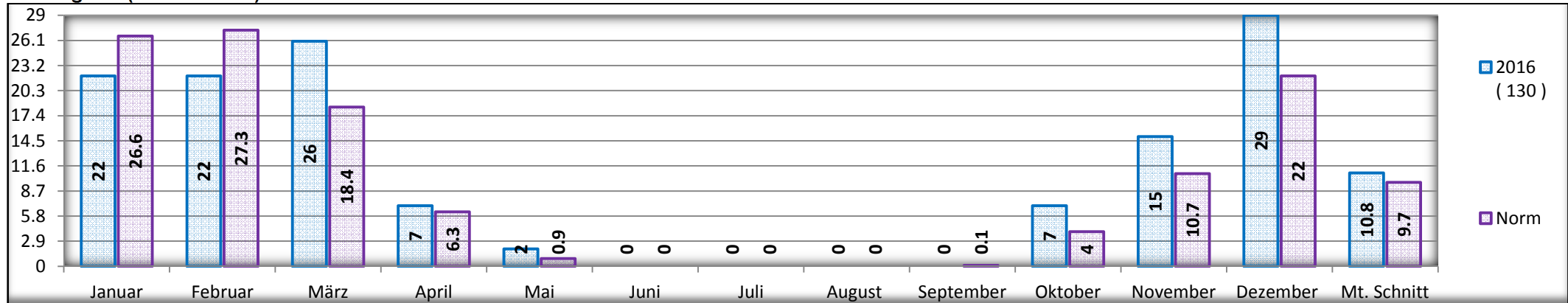


### Eistage ( Tmax. < 0 °c )

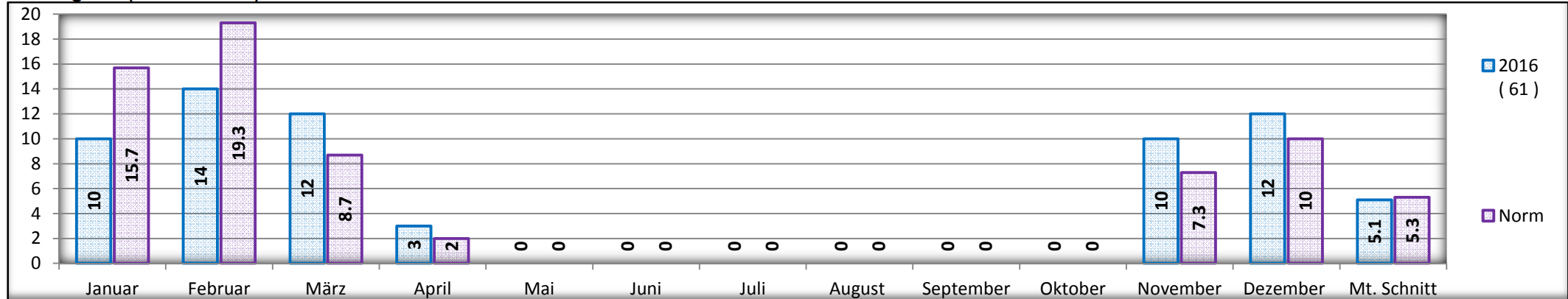
2 0 1 6



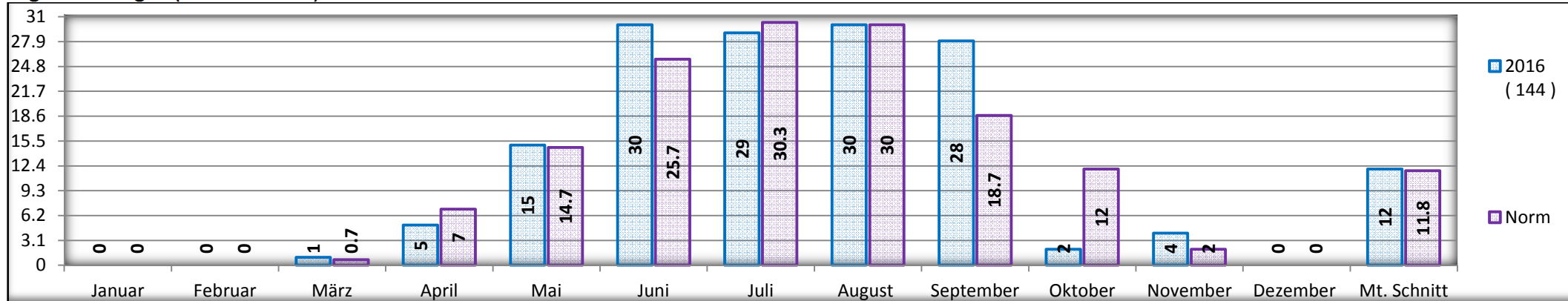
### Frosttage 1 ( Tmin. < 0 °c )



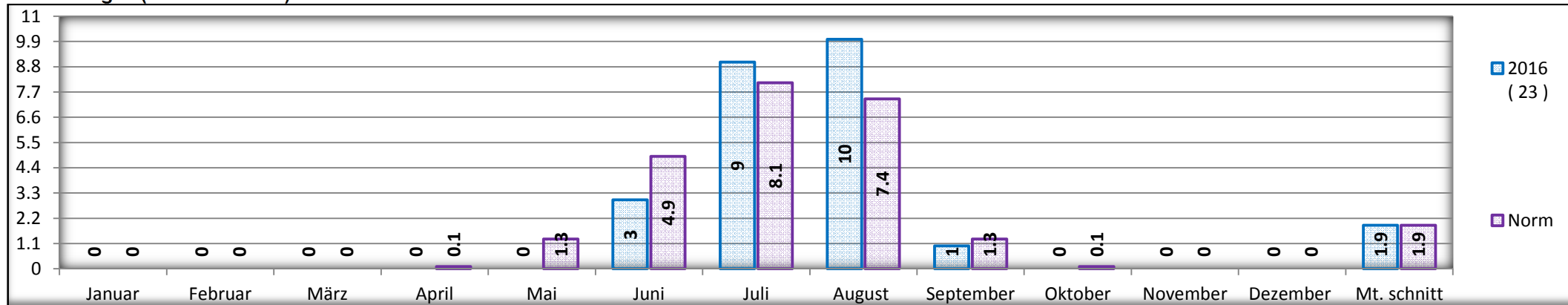
### Frosttage 2 ( Tmed < 0 °c )



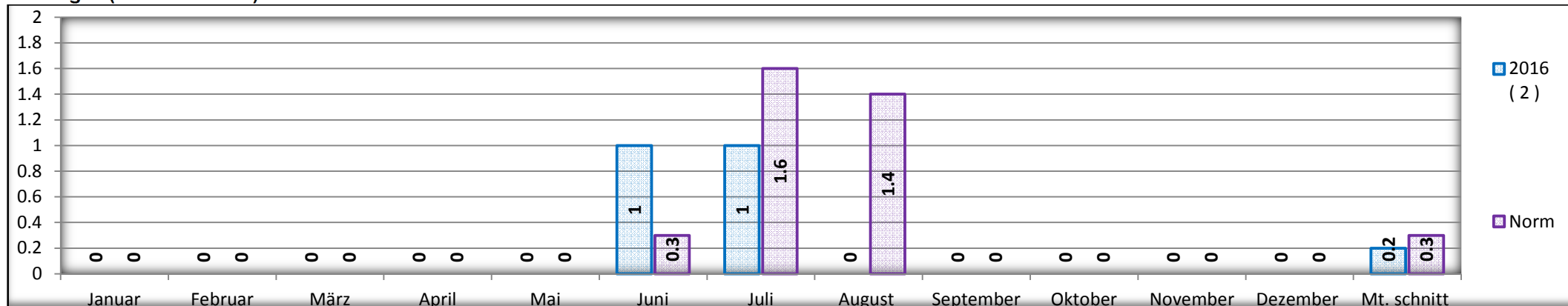
### Vegetationstage ( Tmed > 10 °c )



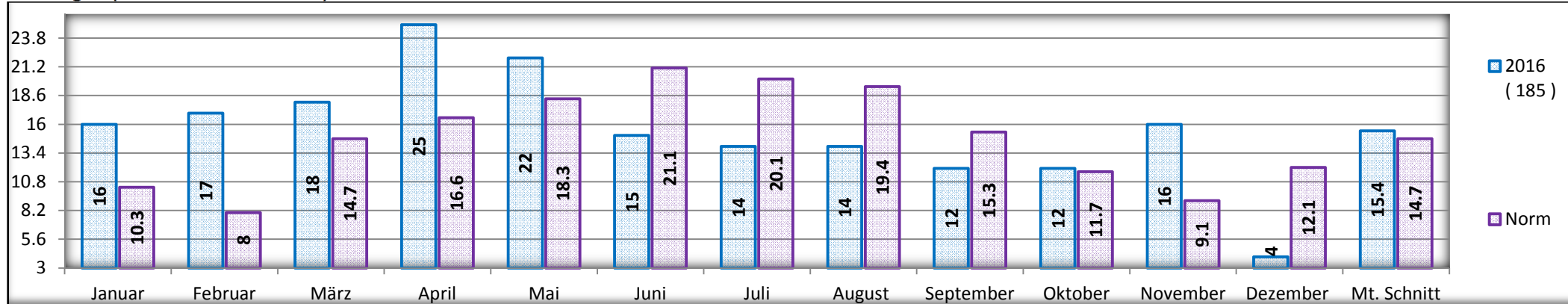
### Sommertage ( Tmax. > 25 °c )



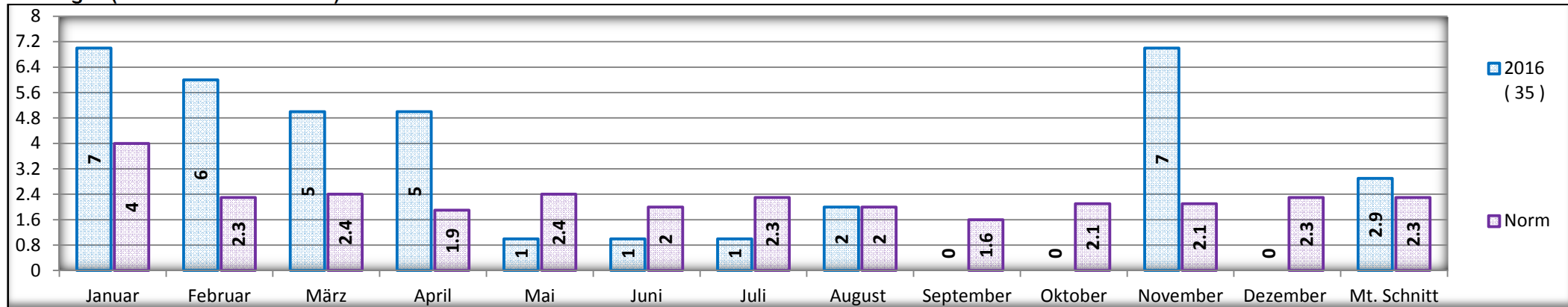
### Hitzetage ( Tmax. > 30 °c )



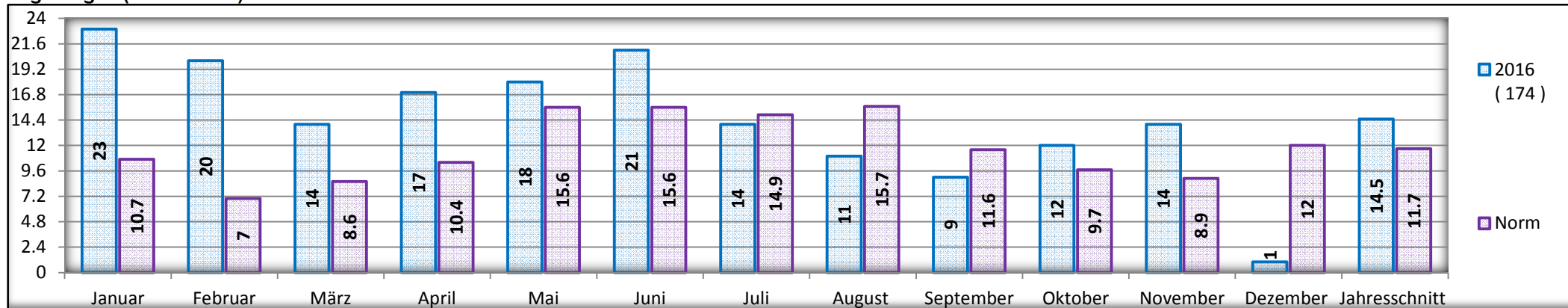
Windtage ( max. Böe. > 20 Km/h )



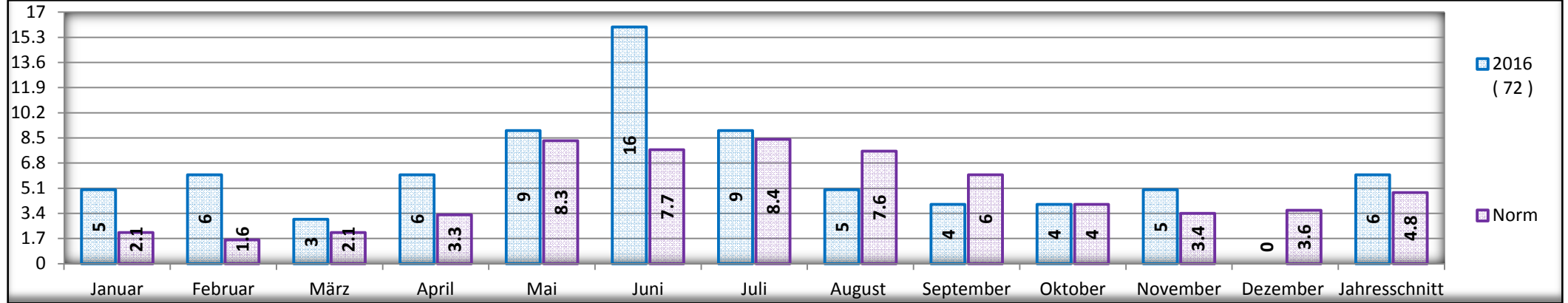
Windtage ( max. Böe. > 40 Km/h )



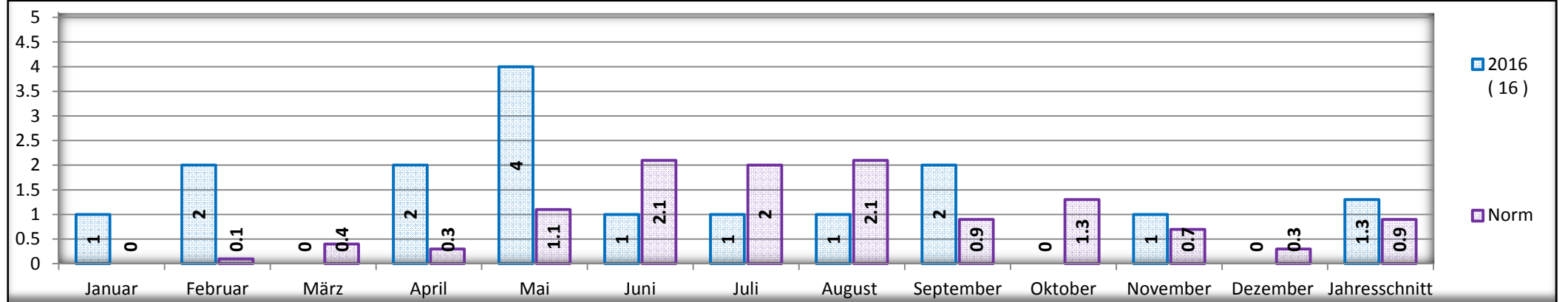
Regentage (> 01.0 mm)



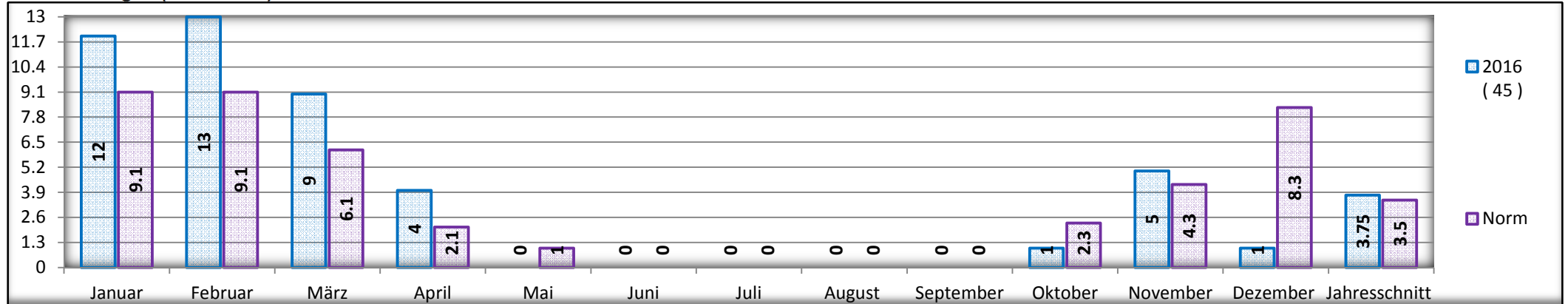
### Regentage (> 10.0 mm)



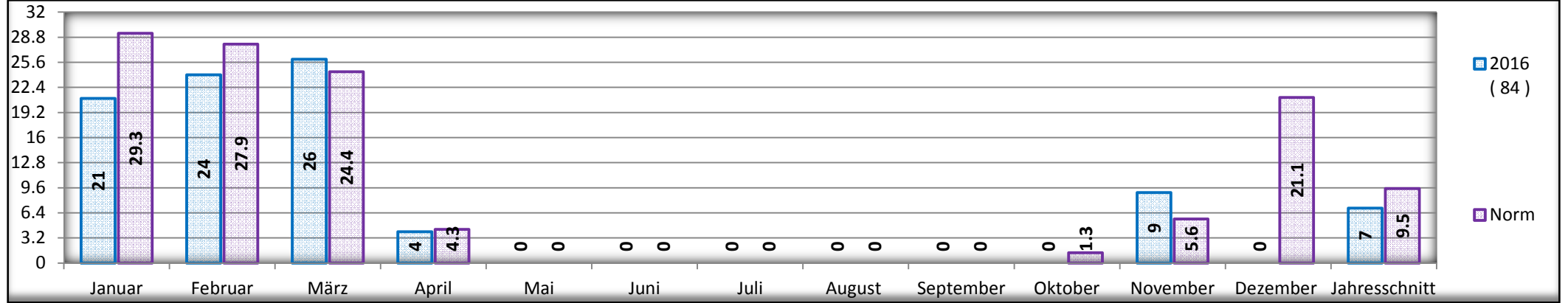
### Regentage (> 30.0 mm)



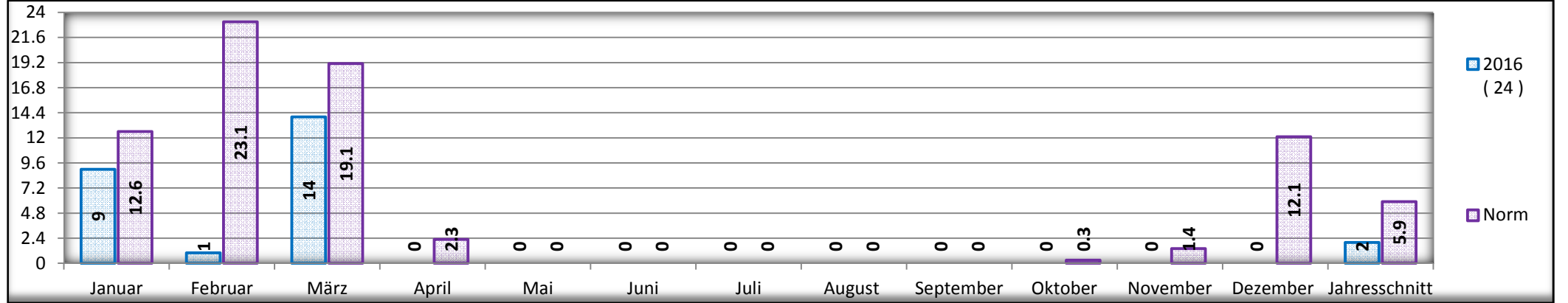
### Schneefalltage (> 01.0 cm)



### Schneetage (> 10.0 cm)



### Schneetage (> 30.0 cm)



### Schneetage (> 60.0 cm)

