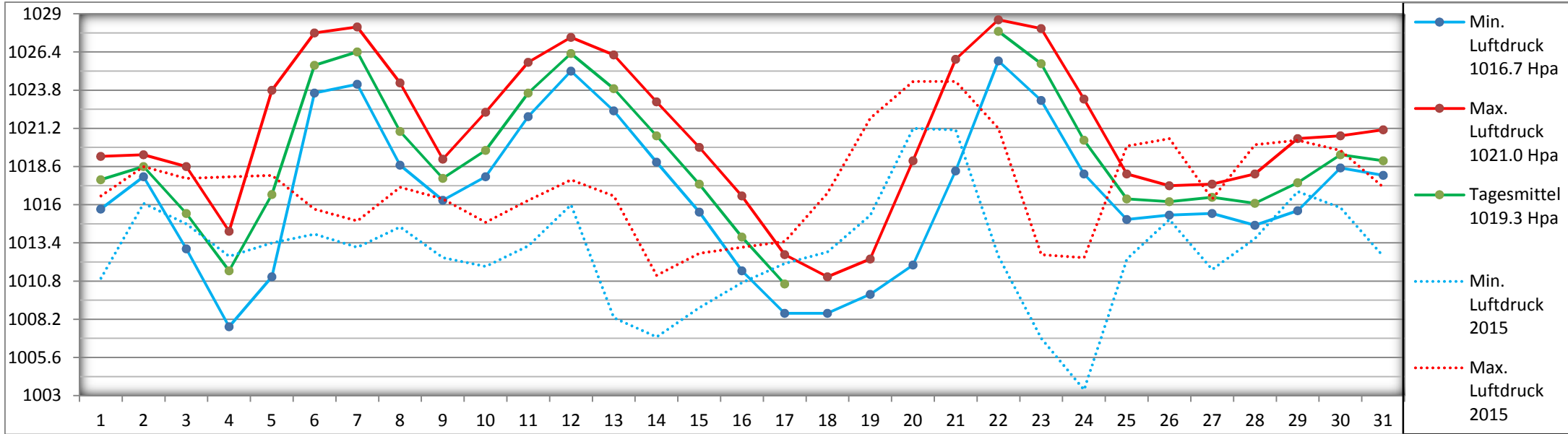
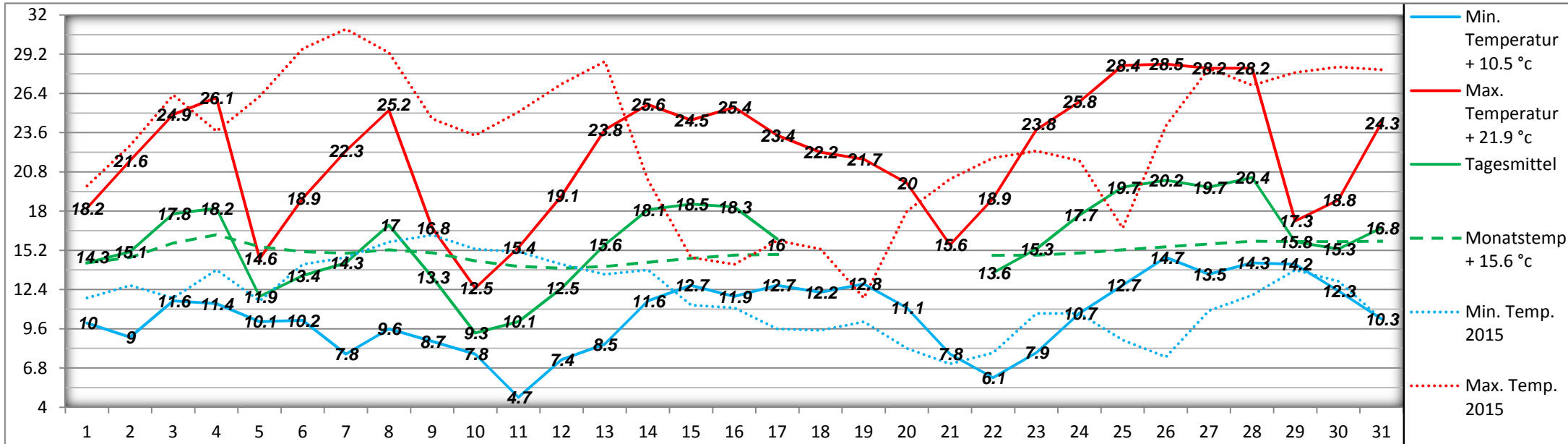


### Luftdruck Hpa (bezogen auf die Meereshöhe)

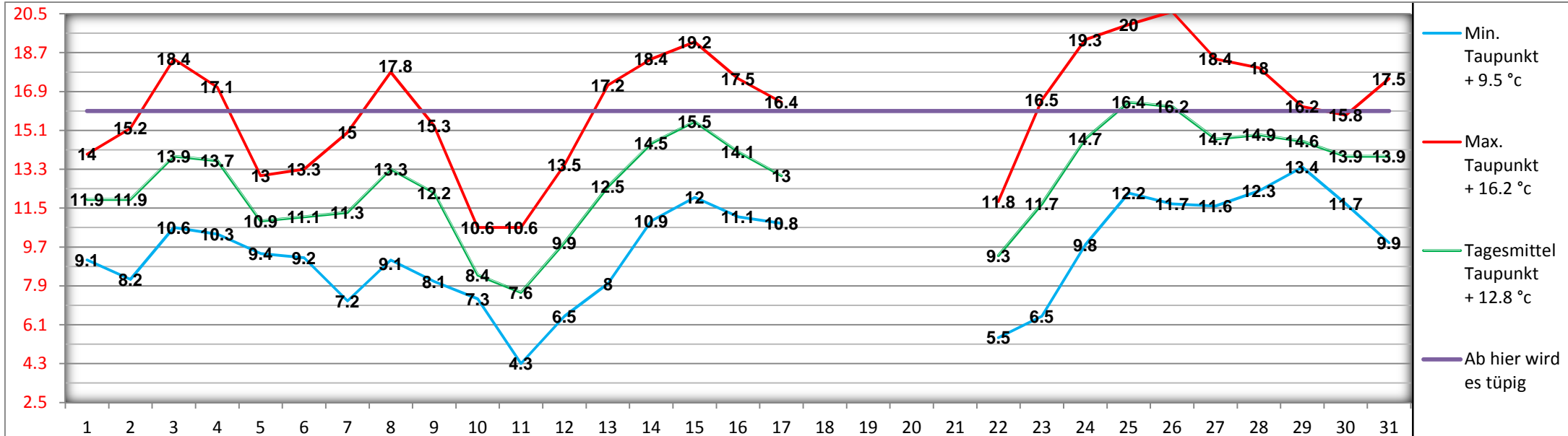
August 2016



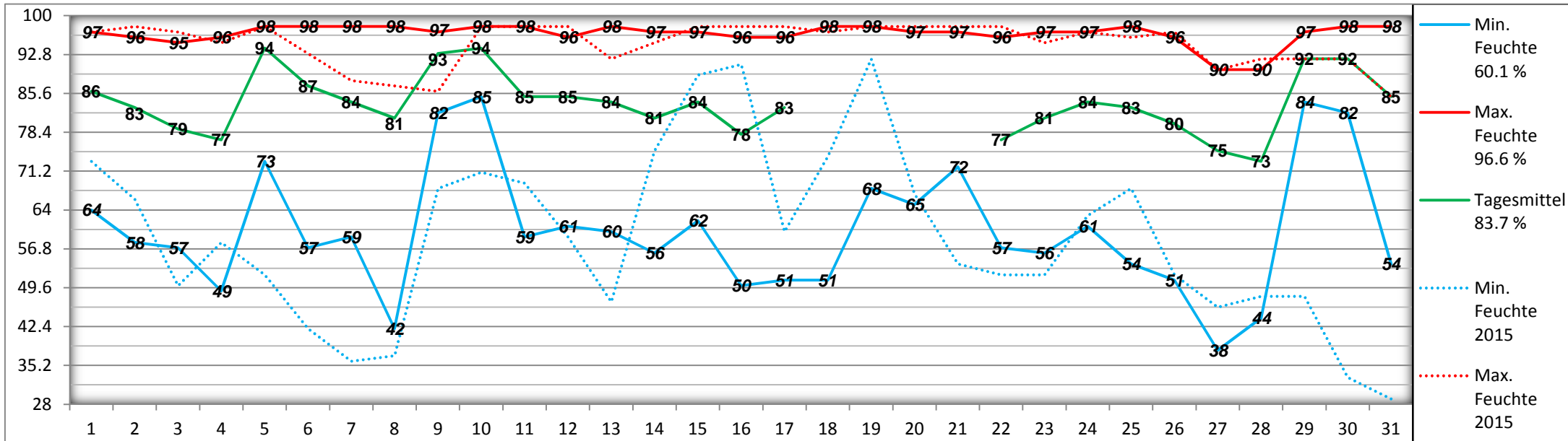
### Lufttemperatur °C (2 m über Boden)



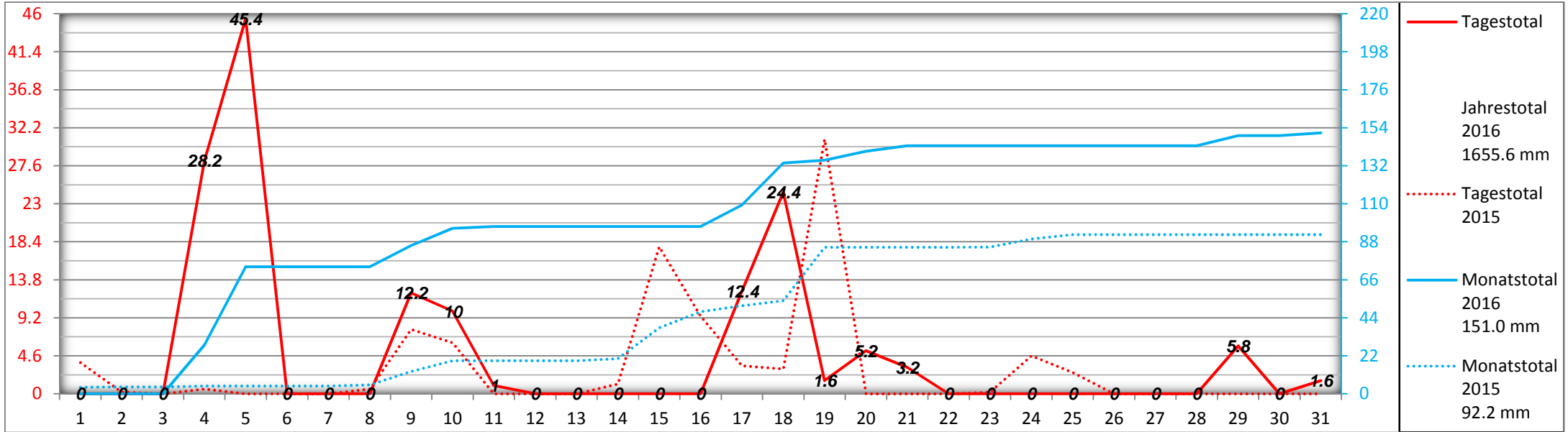
**Taupunkt °C ( 16 °C < = tütig ) ( 2 m über Boden )**



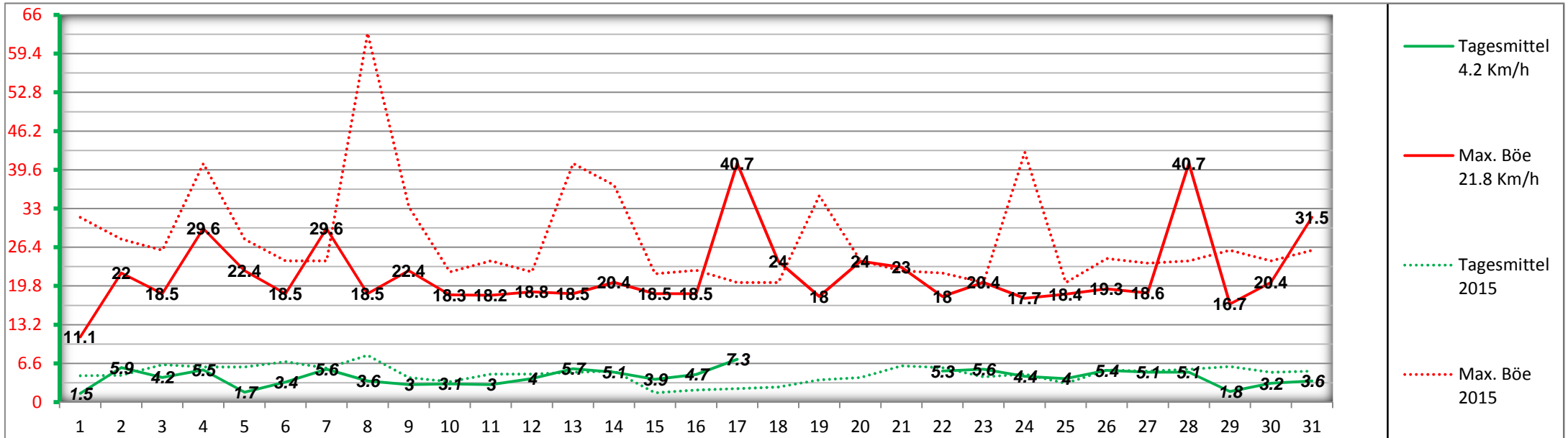
**Relative Luftfeuchtigkeit % ( 2 m über Boden )**



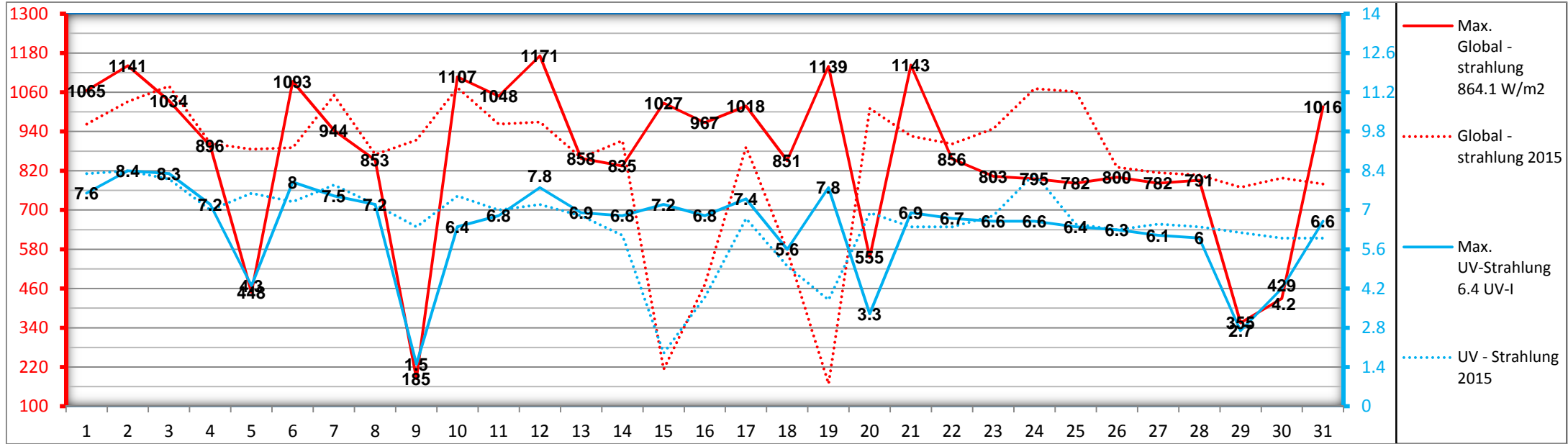
### Niederschlag mm (2 m über Boden)



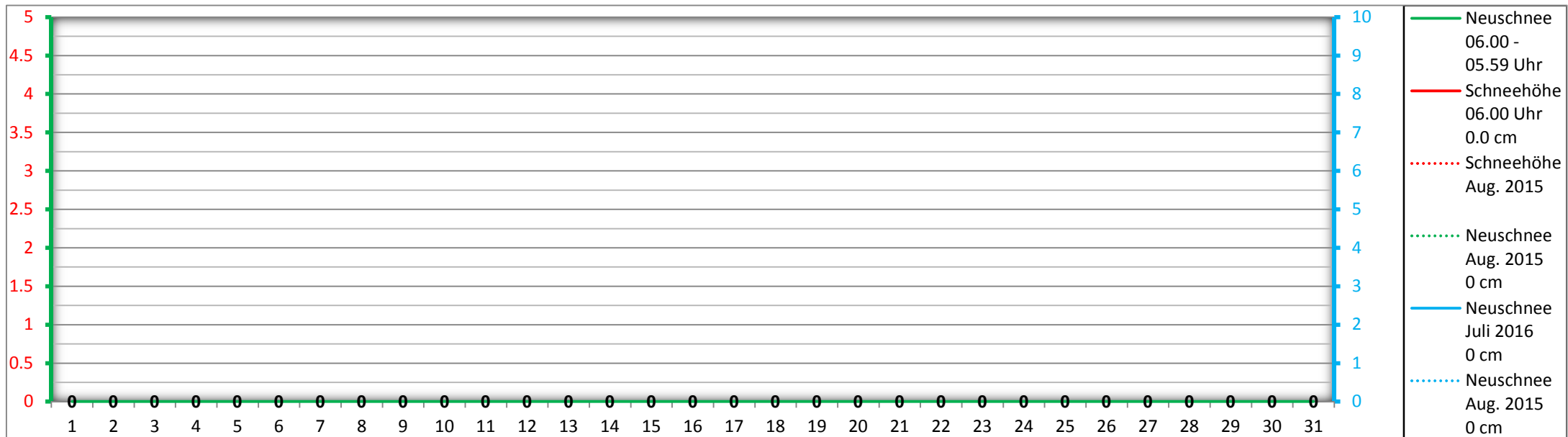
### Windgeschwindigkeit Km / h (6.8 m über Boden)



### Globalstrahlung W / m2 // UV -Strahlung UV - I ( 2 m über Boden )



### Schneehöhe cm



## Monatsübersicht August 2016

