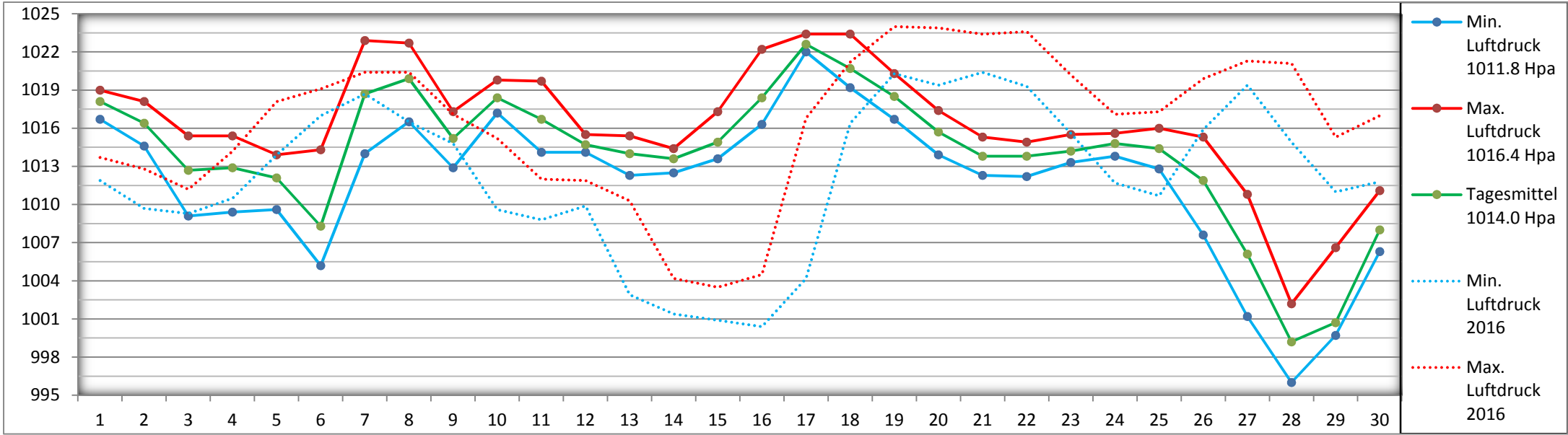
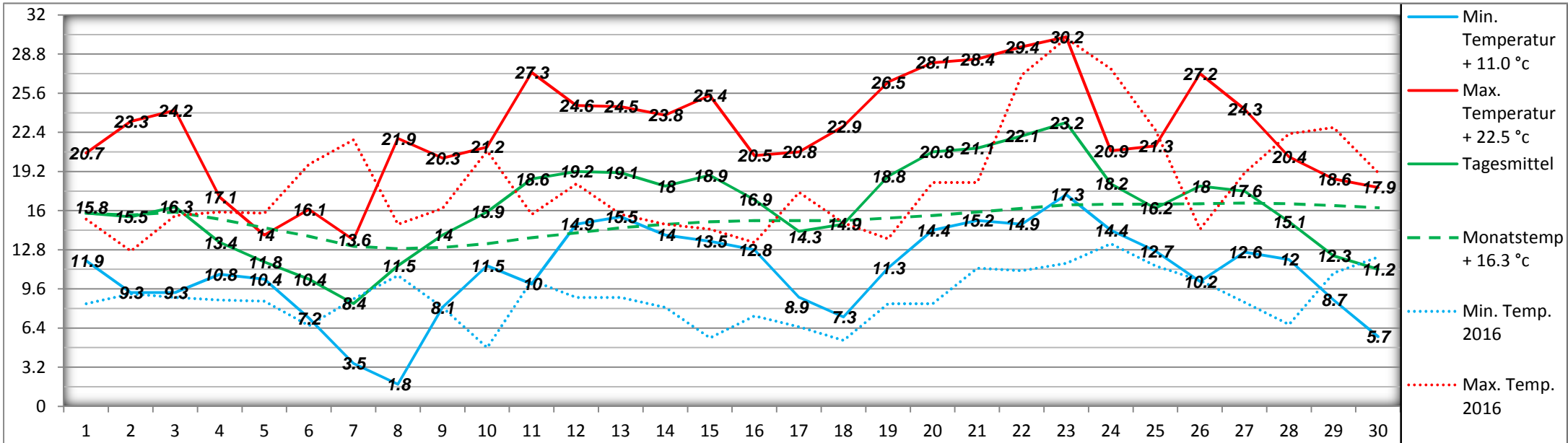


Luftdruck Hpa (bezogen auf die Meereshöhe)

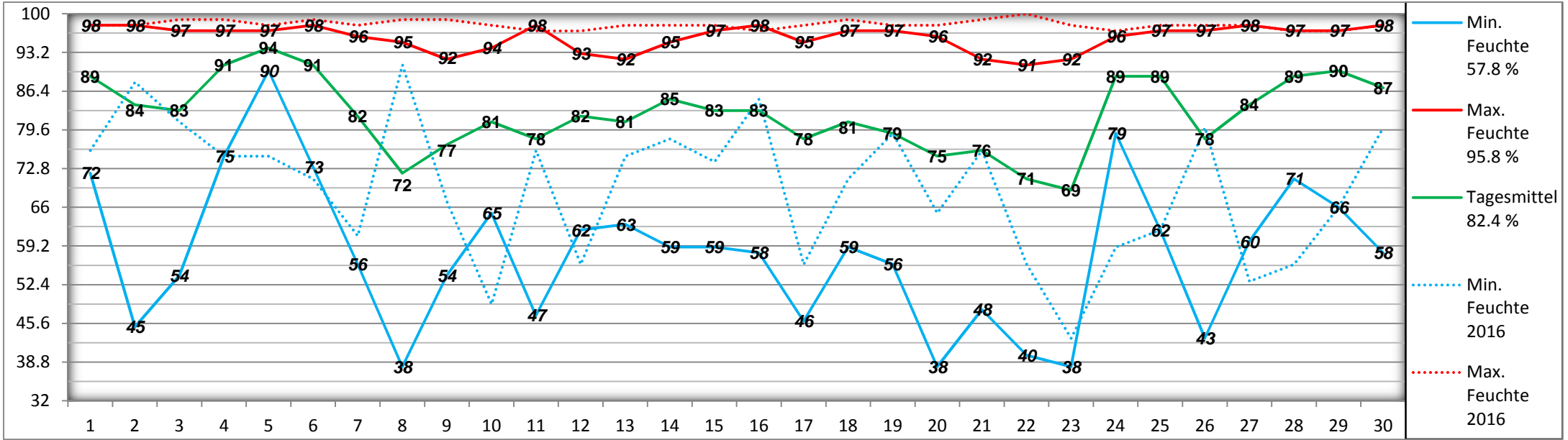
Juni 2017



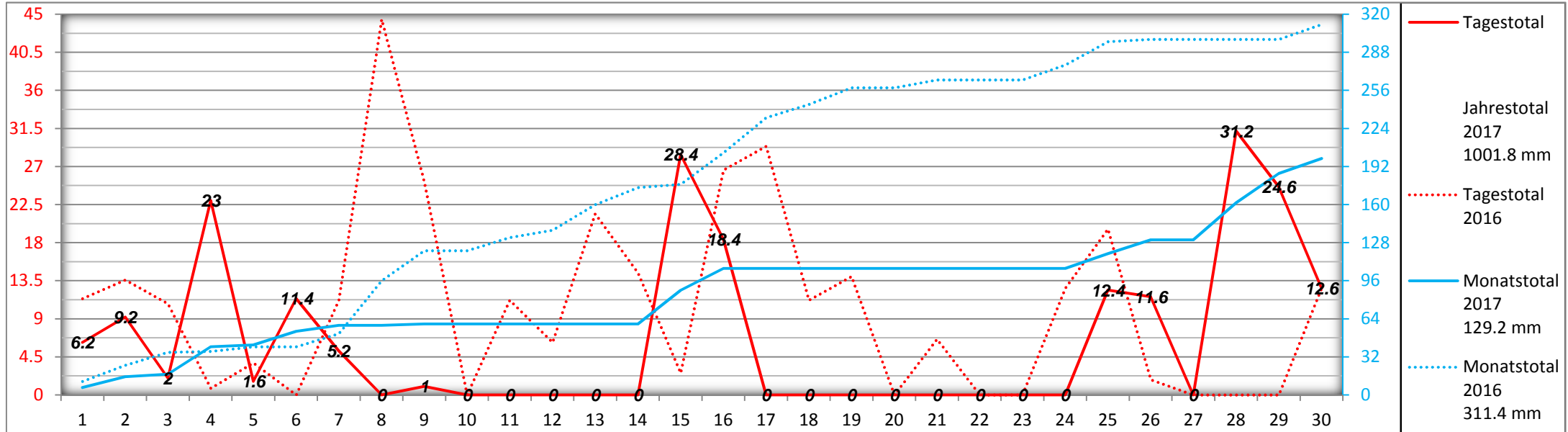
Lufttemperatur °C (2 m über Boden)



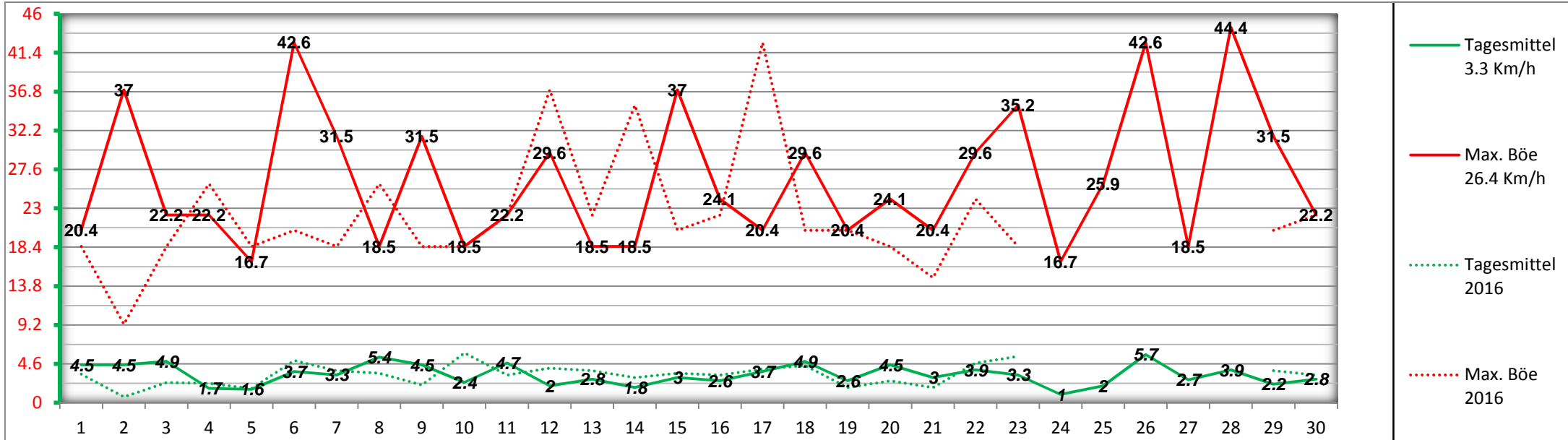
Relative Luftfeuchtigkeit % (2 m über Boden)



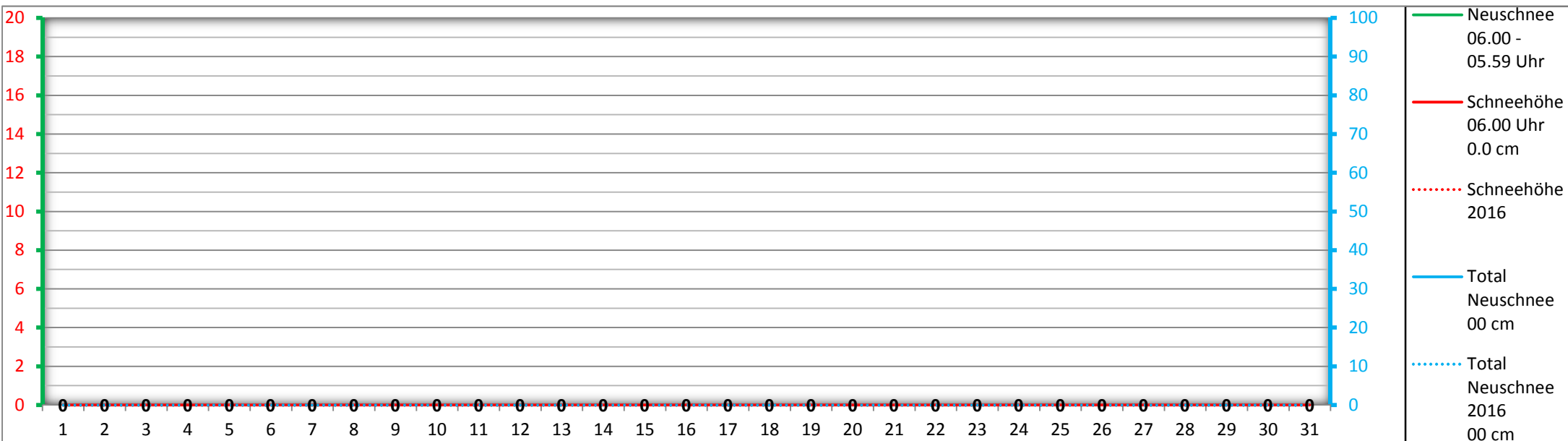
Niederschlag mm (2 m über Boden)



Windgeschwindigkeit Km / h (6.8 m über Boden)



Schneehöhe cm



Monatsübersicht Juni 2017

