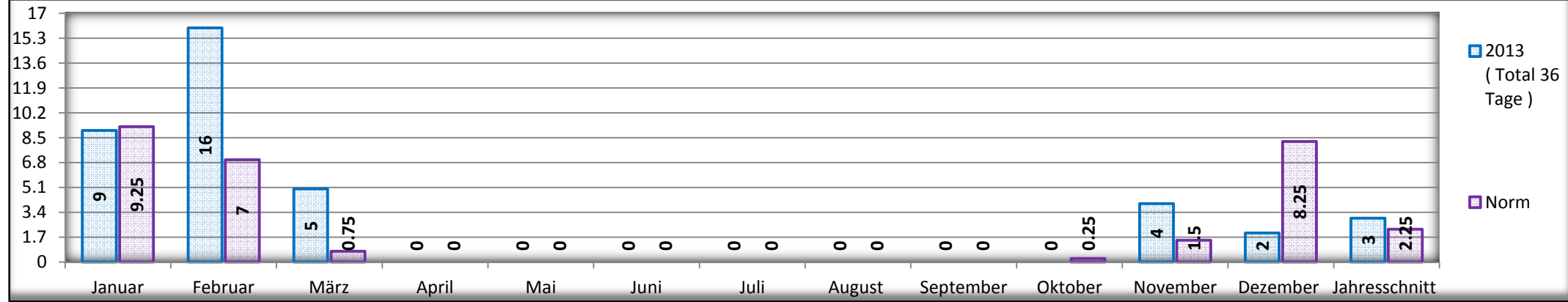
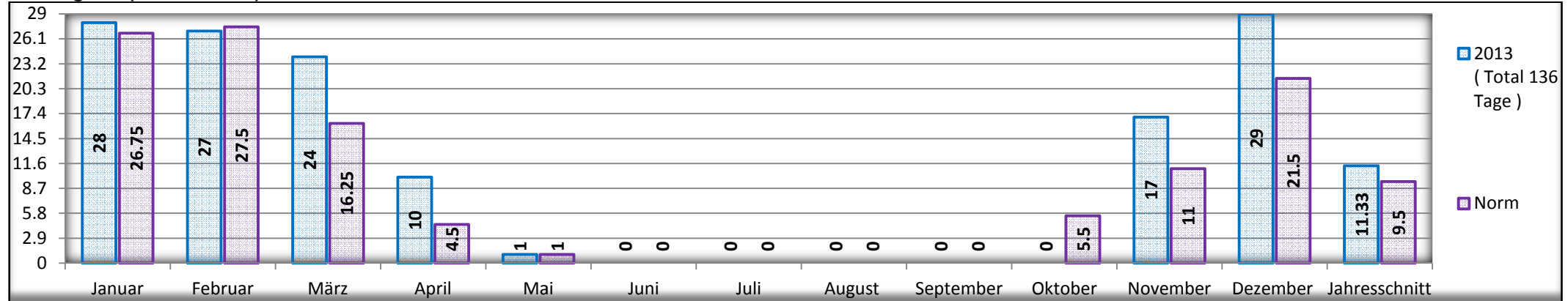


Eistage (Tmax. < 0 °C)

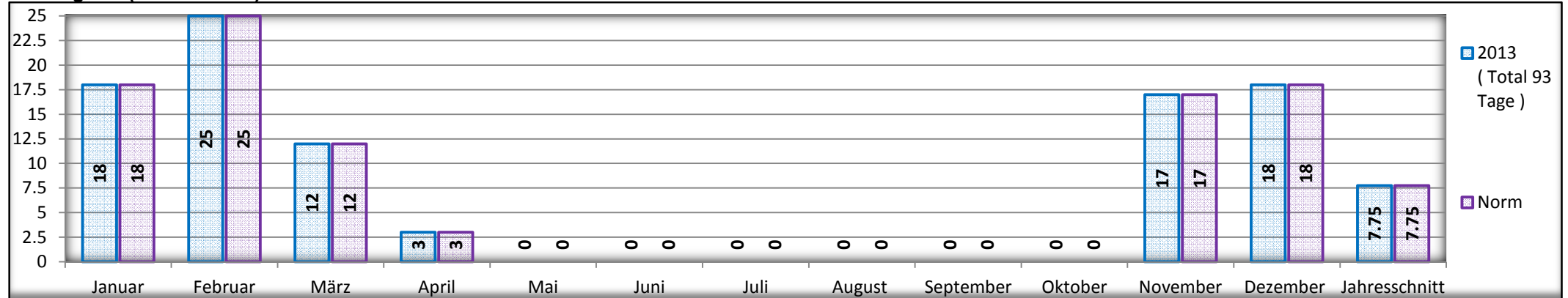
2 0 1 3



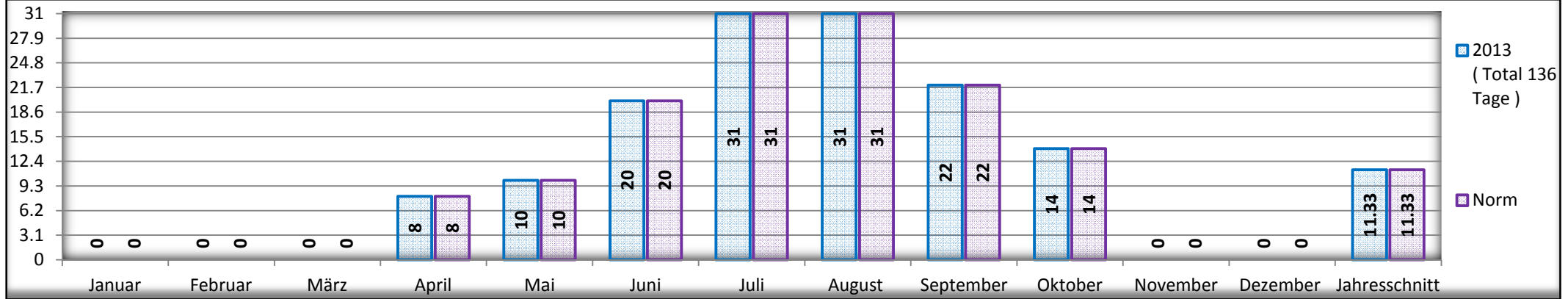
Frosttage 1 (Tmin. < 0 °C)



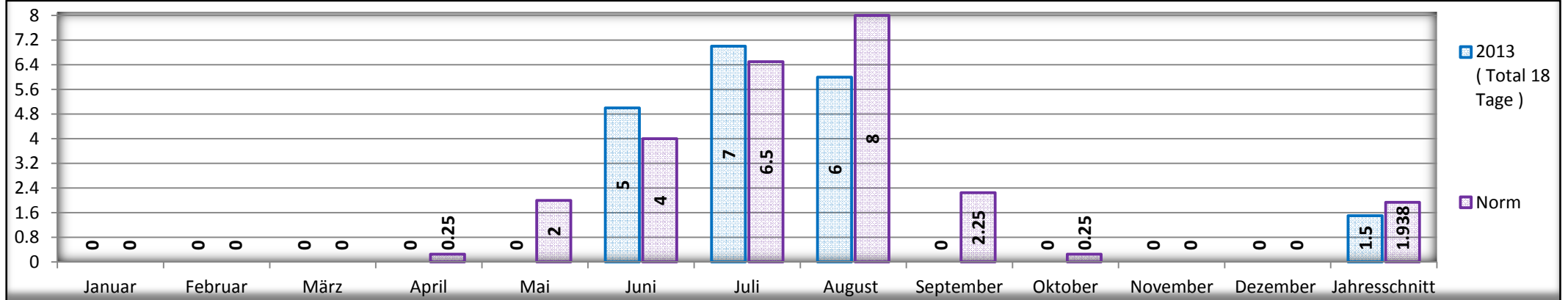
Frosttage 2 (Tmed < 0 °C) **NEU**



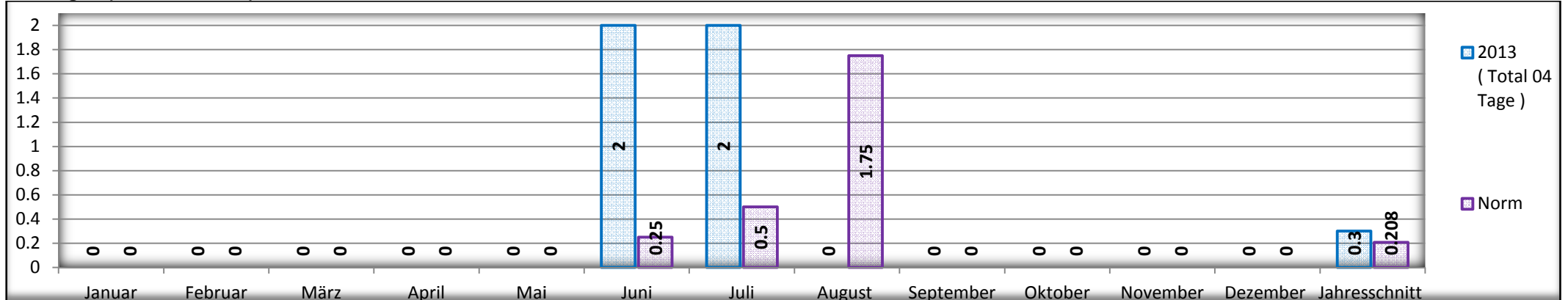
Vegetationstage (Tmed > 10 °c) NEU



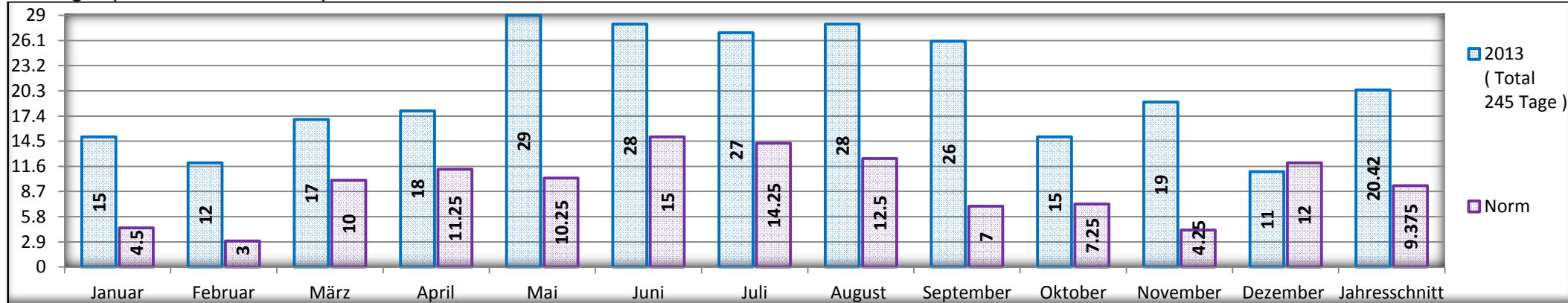
Sommertage (Tmax. > 25 °c)



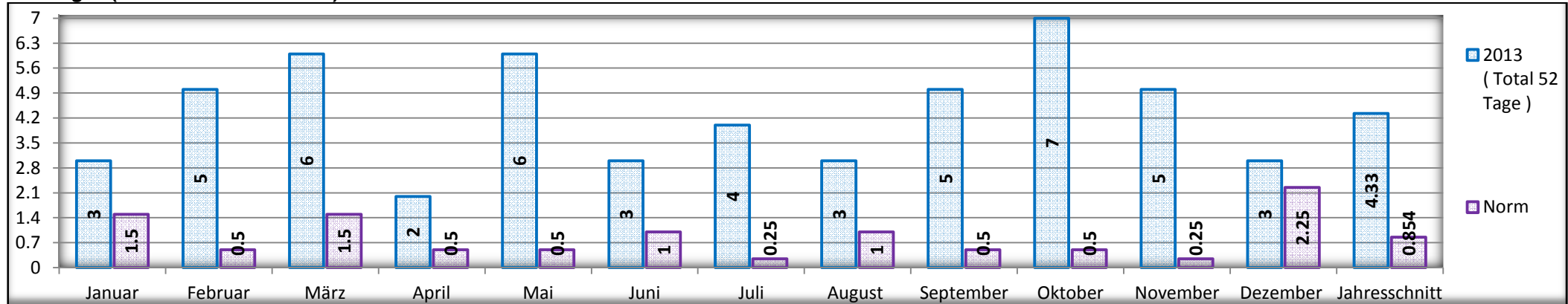
Hitzetage (Tmax. > 30 °c)



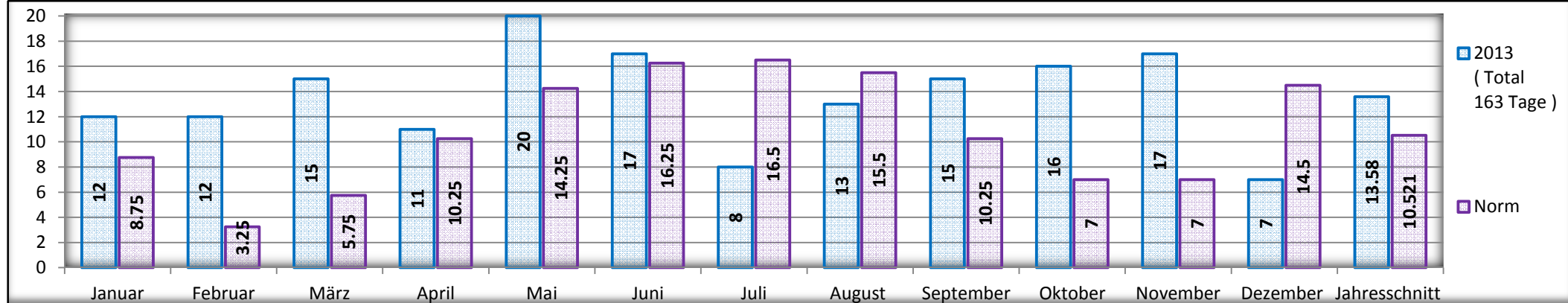
Windtage (max. Böe. > 20 Km/h)



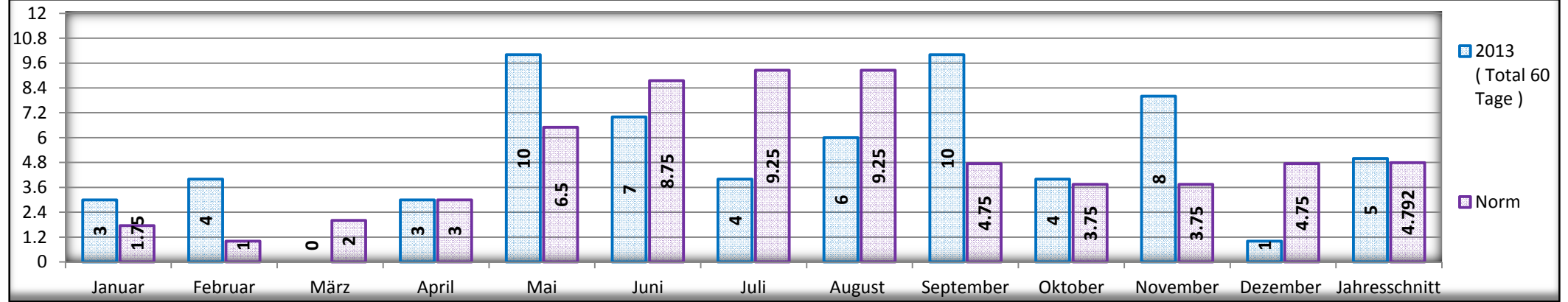
Windtage (max. Böe. > 40 Km/h)



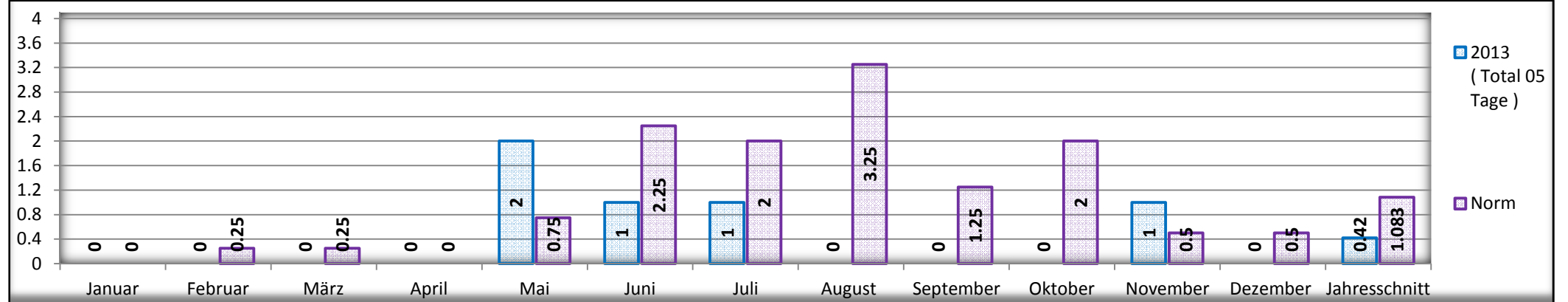
Regentage (> 01.0 mm)



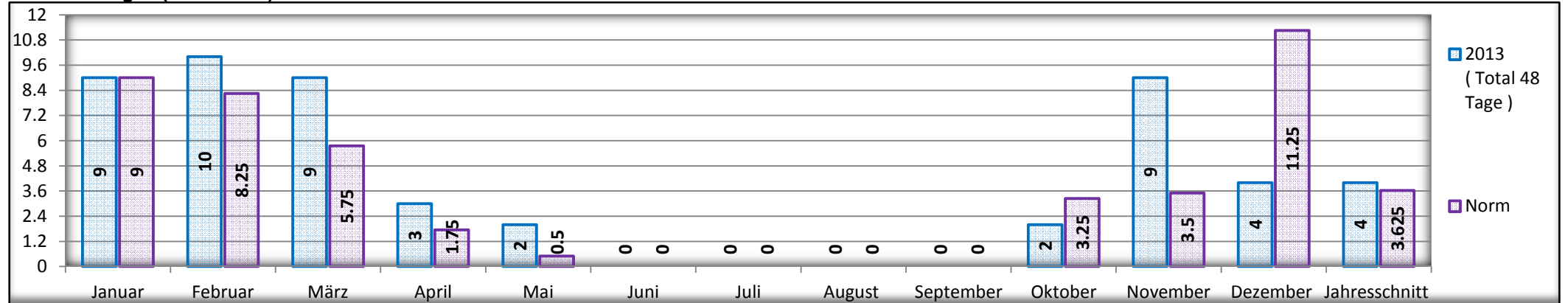
Regentage (> 10.0 mm)



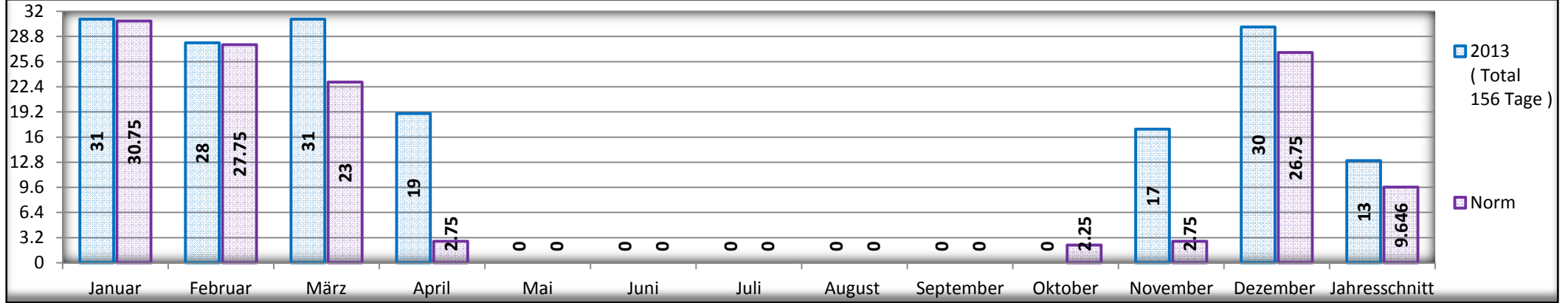
Regentage (> 30.0 mm)



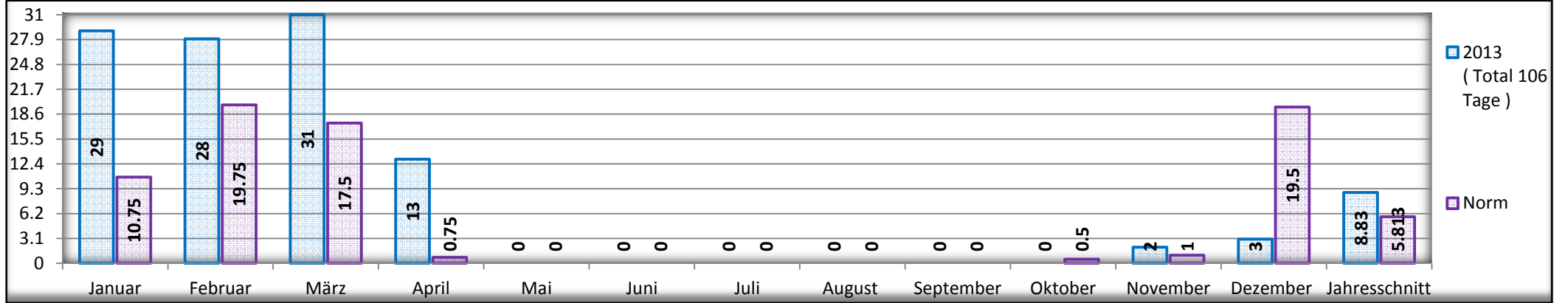
Schneefalltage (> 01.0 cm)



Schneetage (> 10.0 cm)



Schneetage (> 30.0 cm)



Schneetage (> 60.0 cm)

