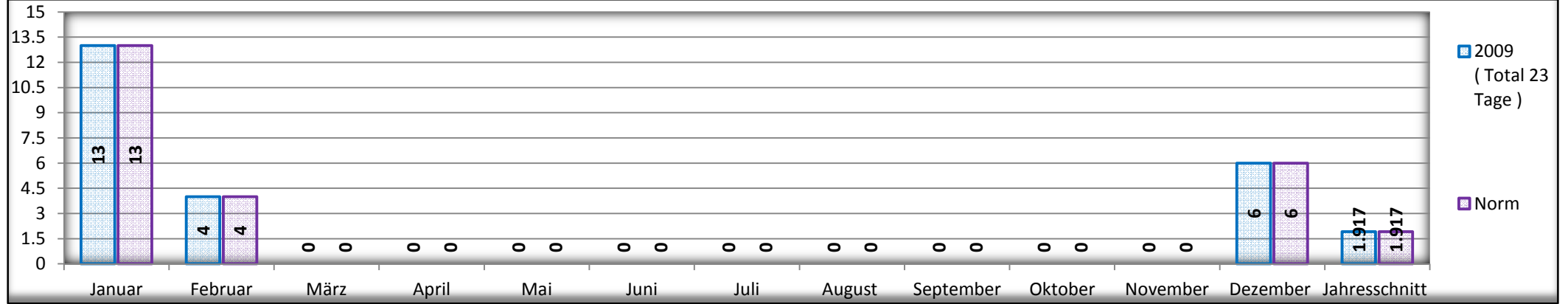
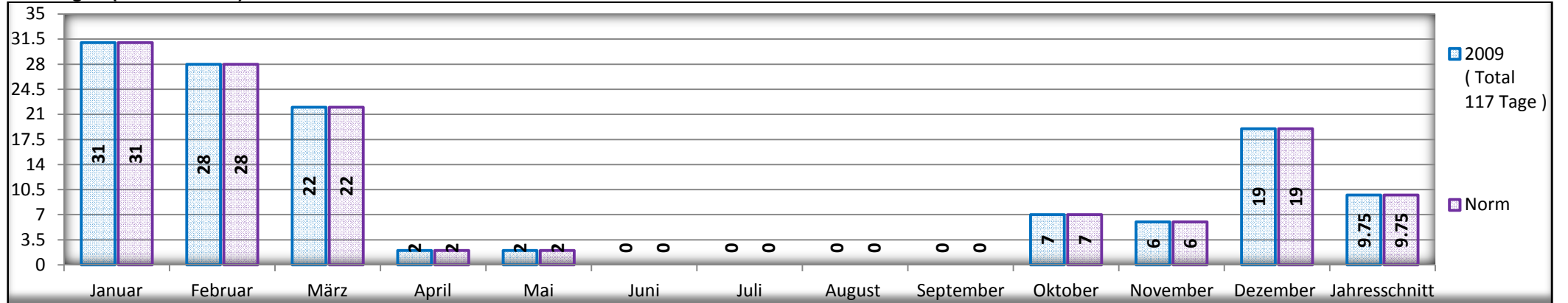


### Eistage (Tmax. < 0 °C)

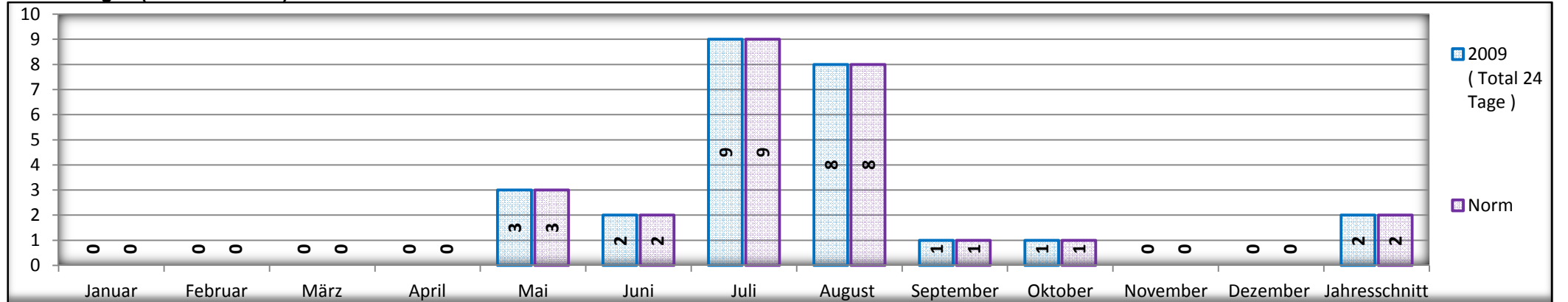
2 0 0 9



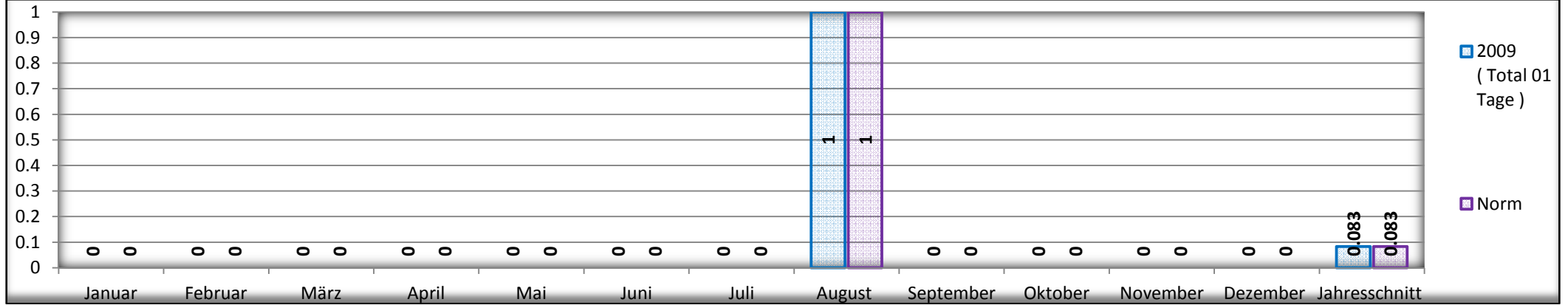
### Frosttage (Tmin. < 0 °C)



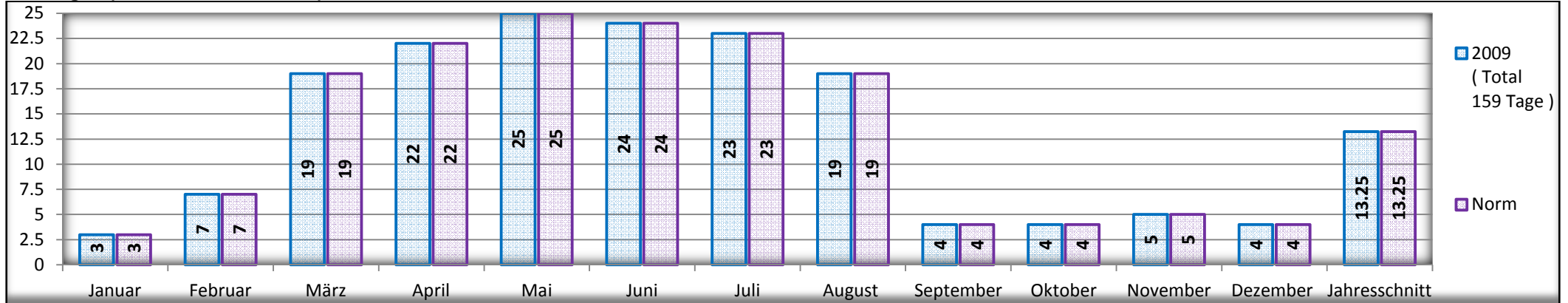
### Sommertage (Tmax. > 25 °C)



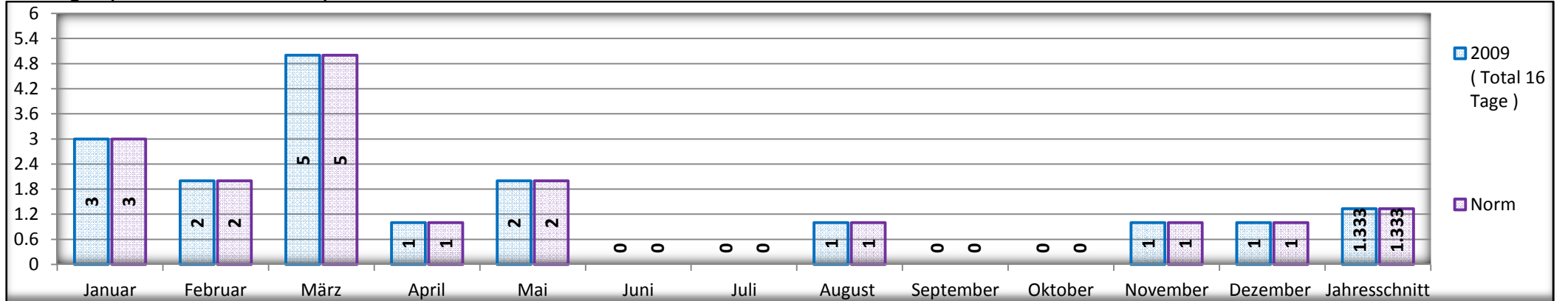
### Hitzetage ( Tmax. > 30 °c )



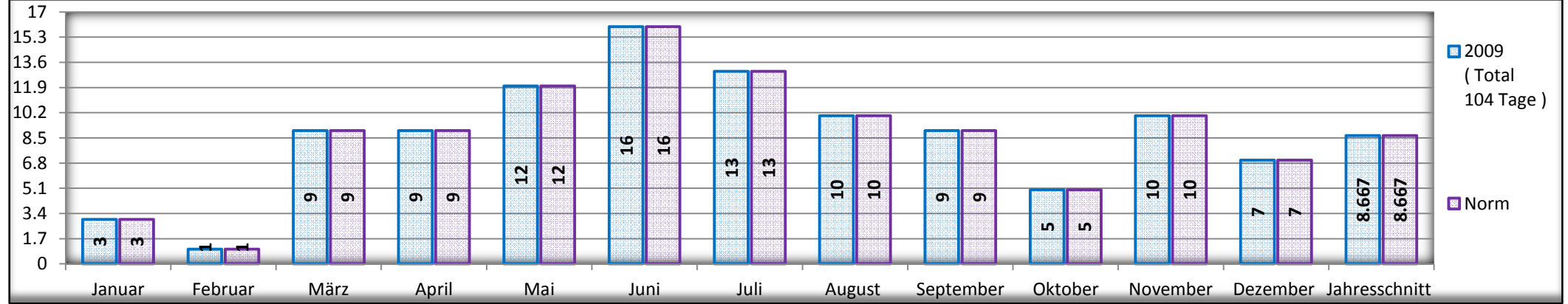
### Windtage ( max. Böe. > 20 Km/h )



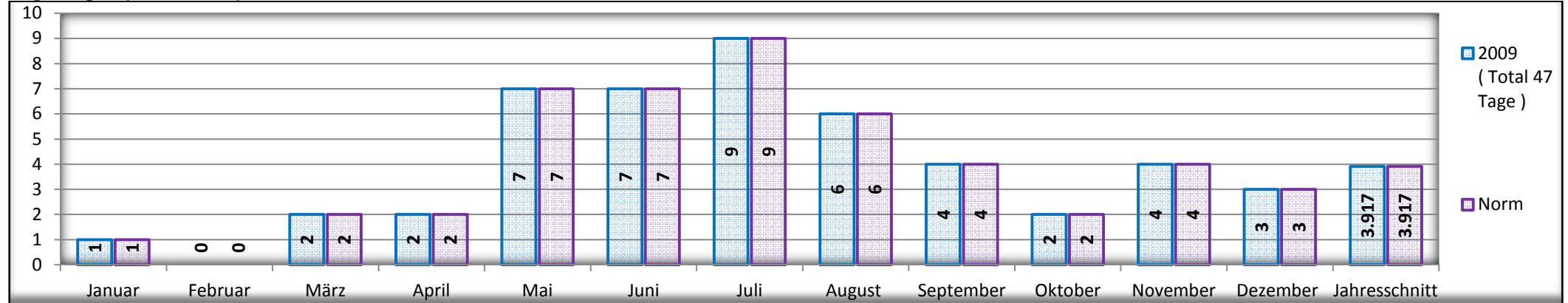
### Windtage ( max Böe . > 40 Km/h )



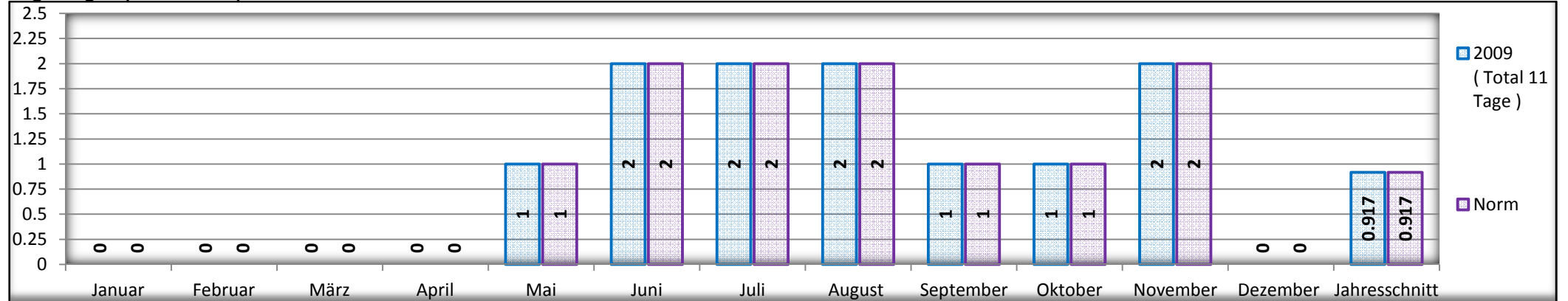
### Regentage (> 01.0 mm)



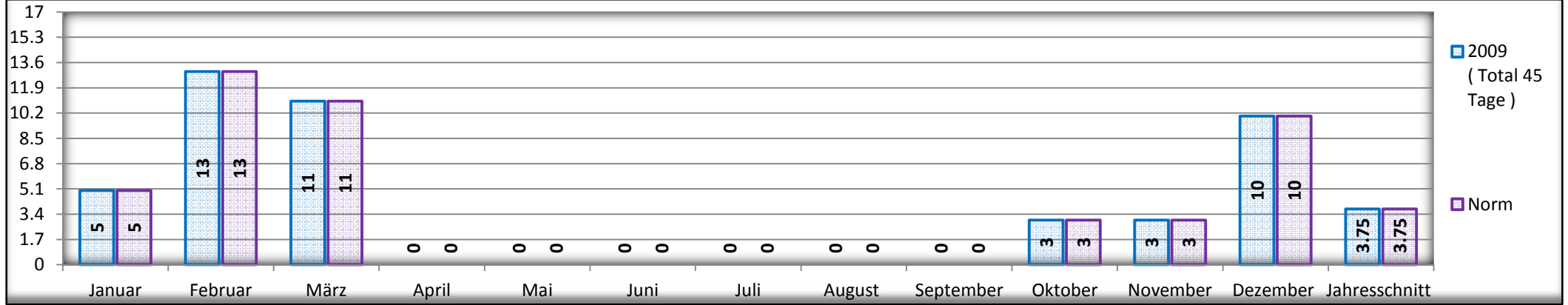
### Regentage (> 10.0 mm)



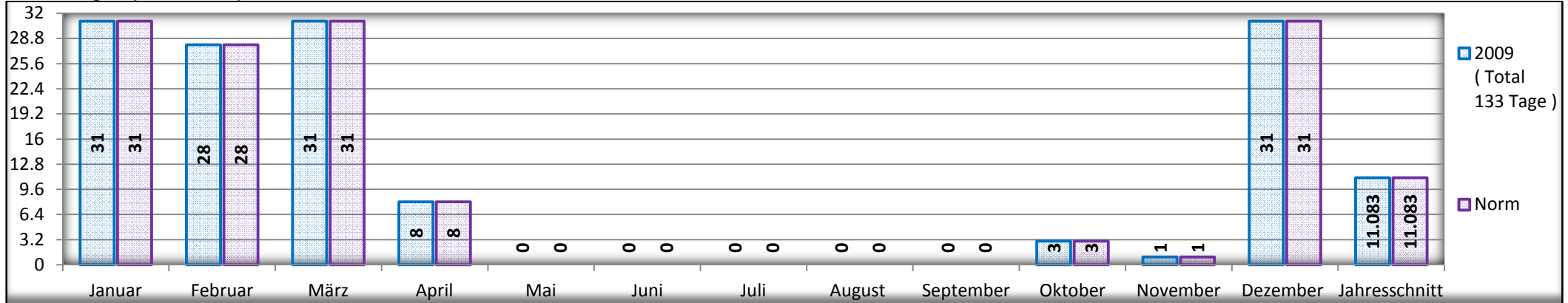
### Regentage (> 30.0 mm)



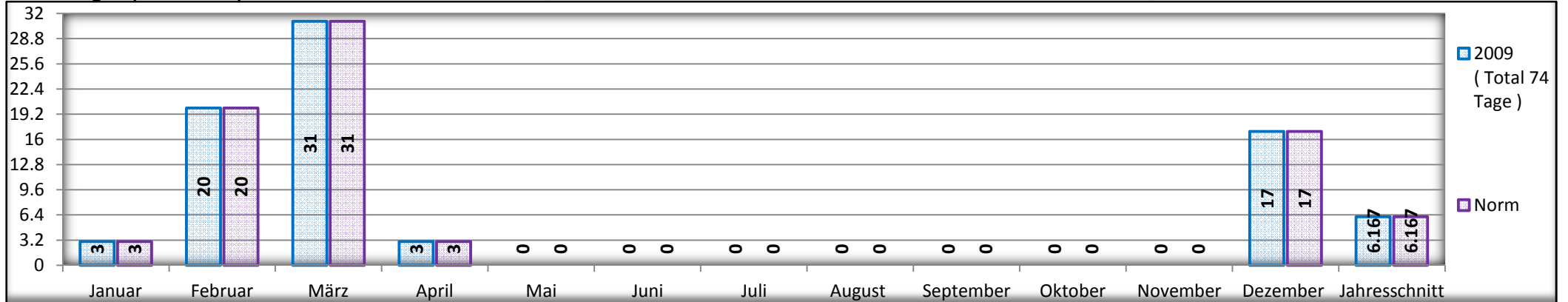
### Schneefalltage (> 01.0 cm)



### Schneetage (> 10.0 cm)



### Schneetage (> 30.0 cm)



Schneetage (> 60.0 cm)

