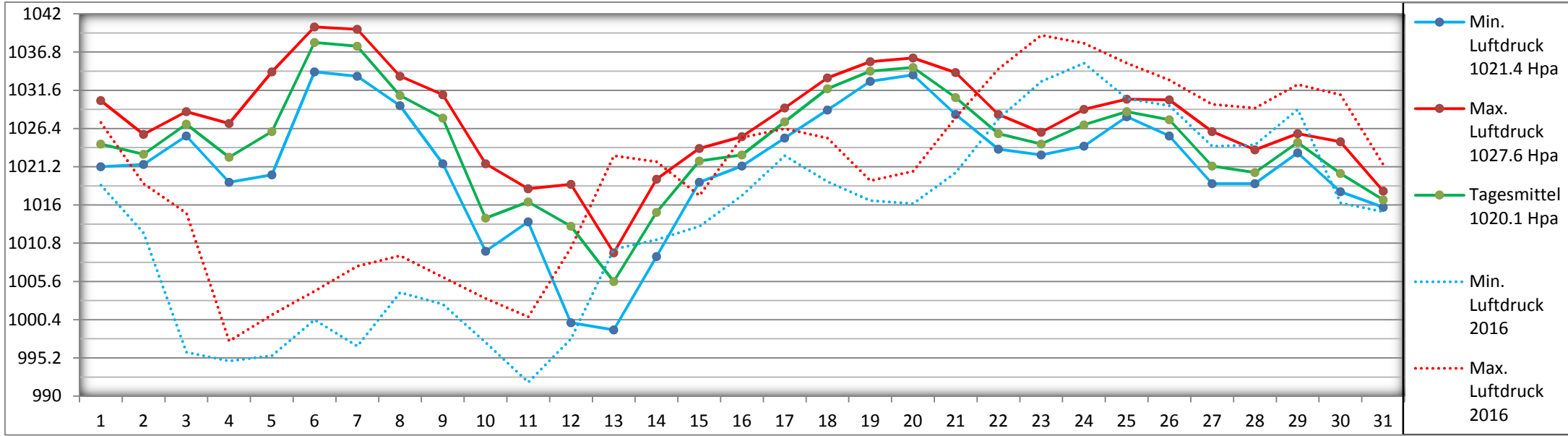
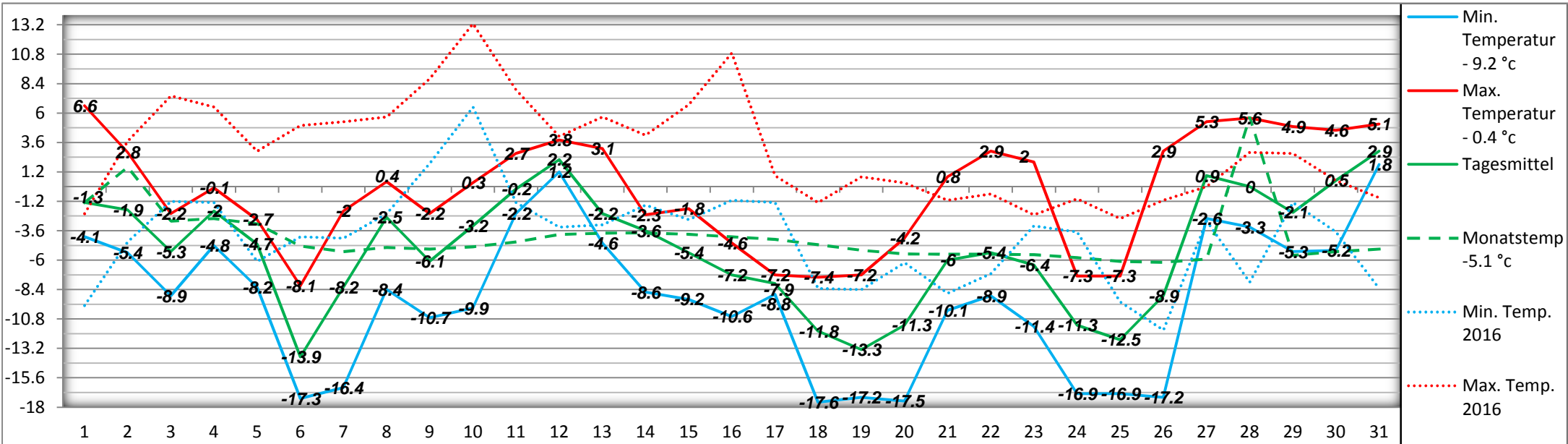


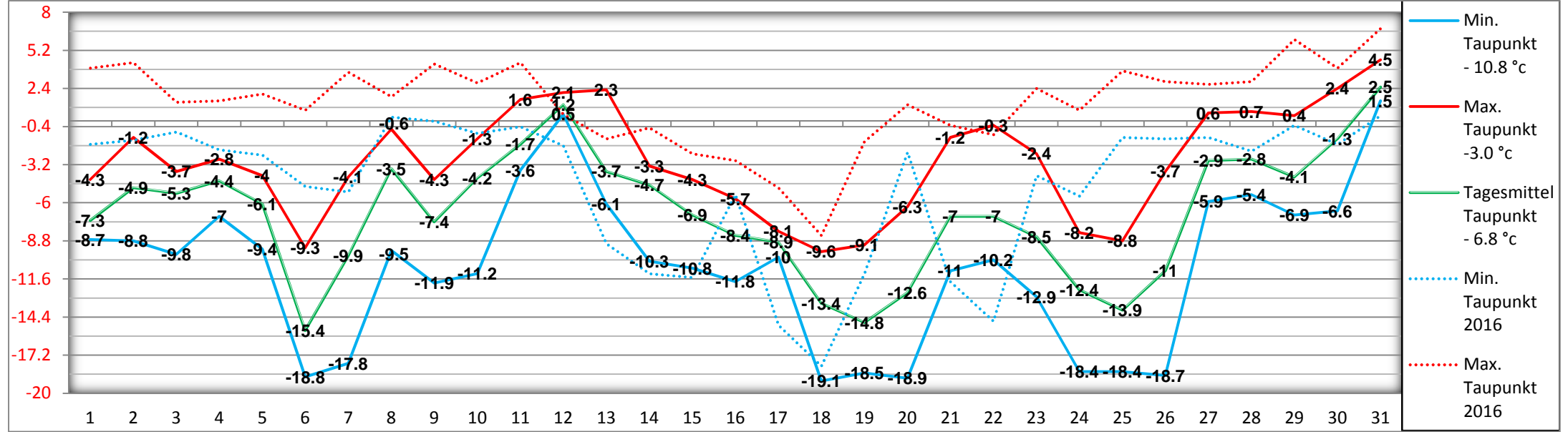
## Luftdruck Hpa (bezogen auf die Meereshöhe) Januar 2017



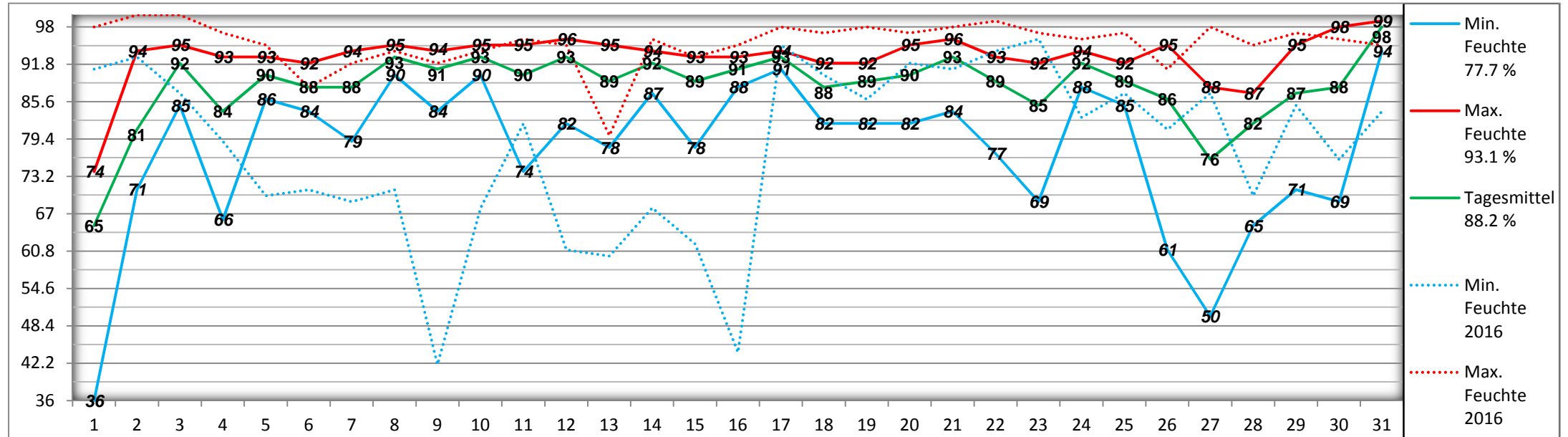
## Lufttemperatur °C (2 m über Boden)



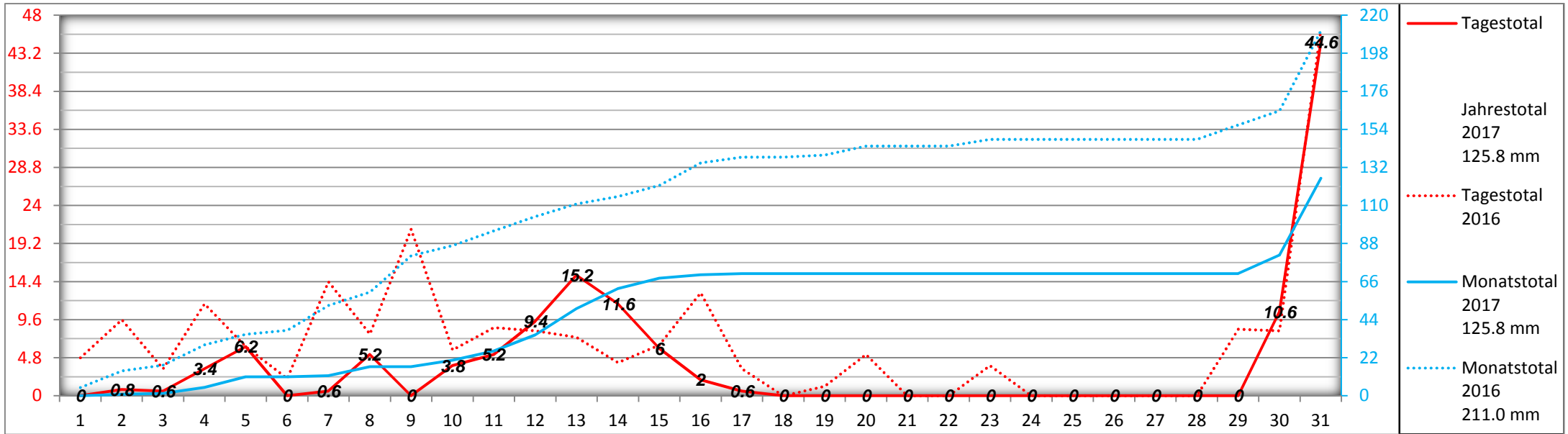
**Taupunkt °C ( 16 °C < = tüpzig ) ( 2 m über Boden )**



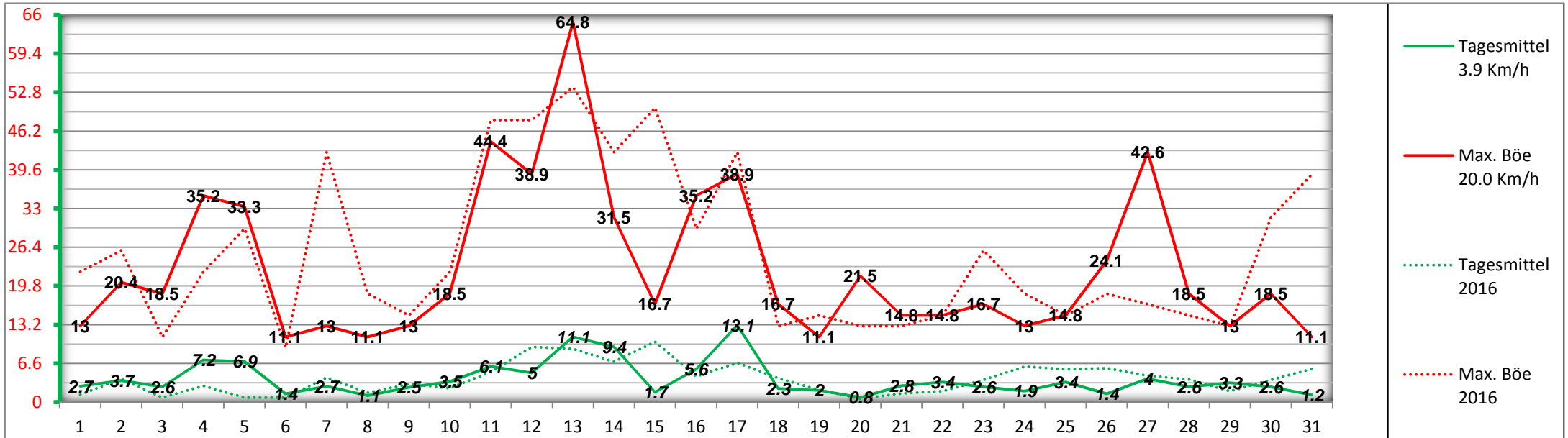
**Relative Luftfeuchtigkeit % ( 2 m über Boden )**



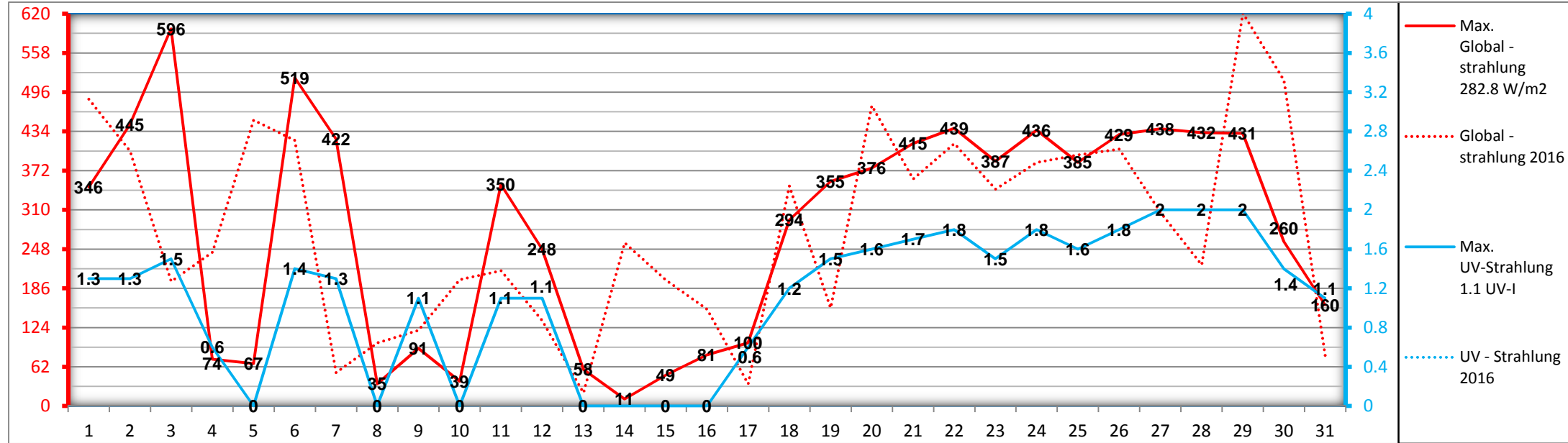
### Niederschlag mm (2 m über Boden)



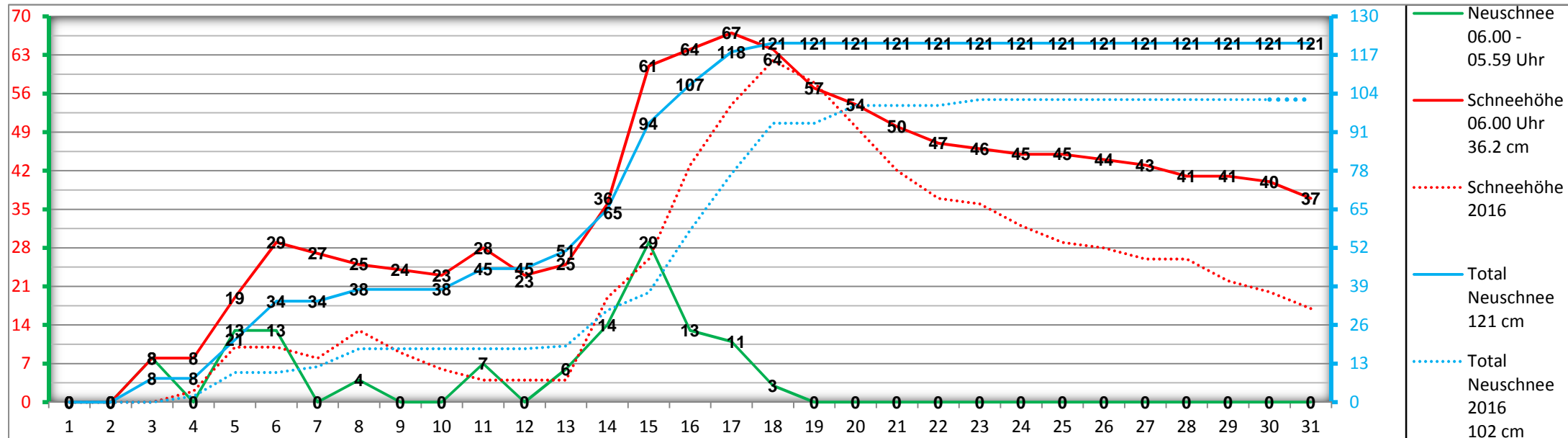
### Windgeschwindigkeit Km / h (6.8 m über Boden)



### Globalstrahlung W / m2 // UV –Strahlung UV - I (2 m über Boden)



### Schneehöhe cm



## Monatsübersicht Januar 2017

