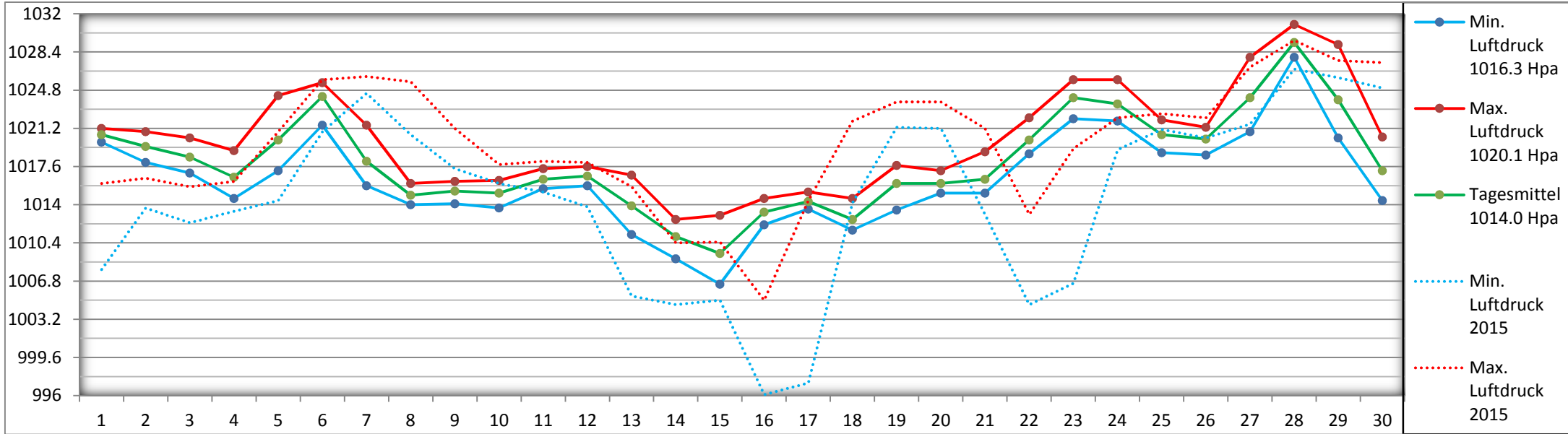
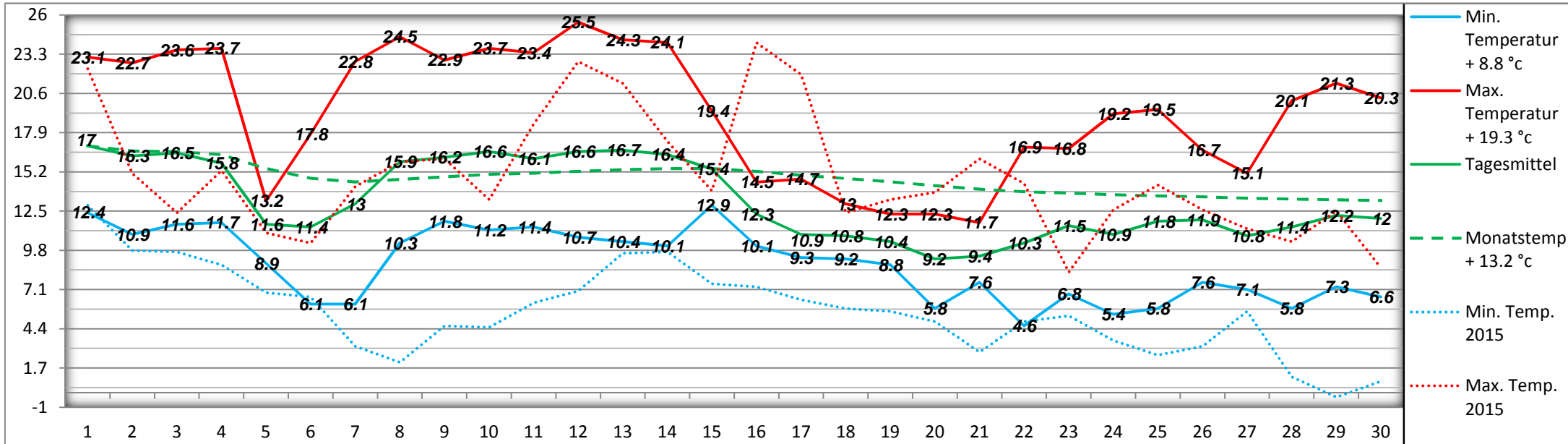


## Luftdruck Hpa (bezogen auf die Meereshöhe)

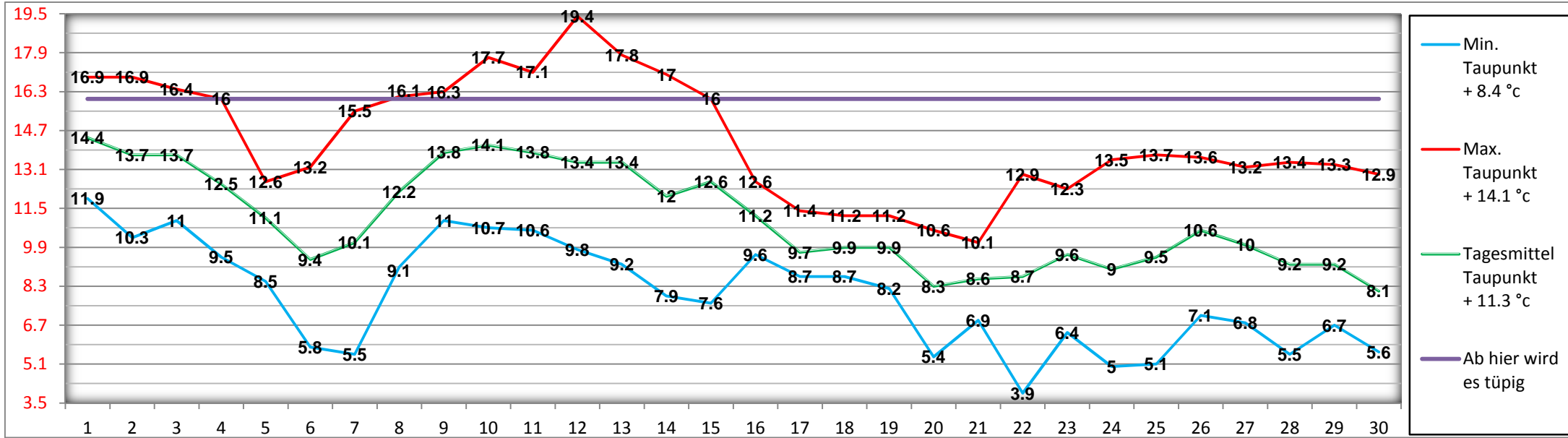
September 2016



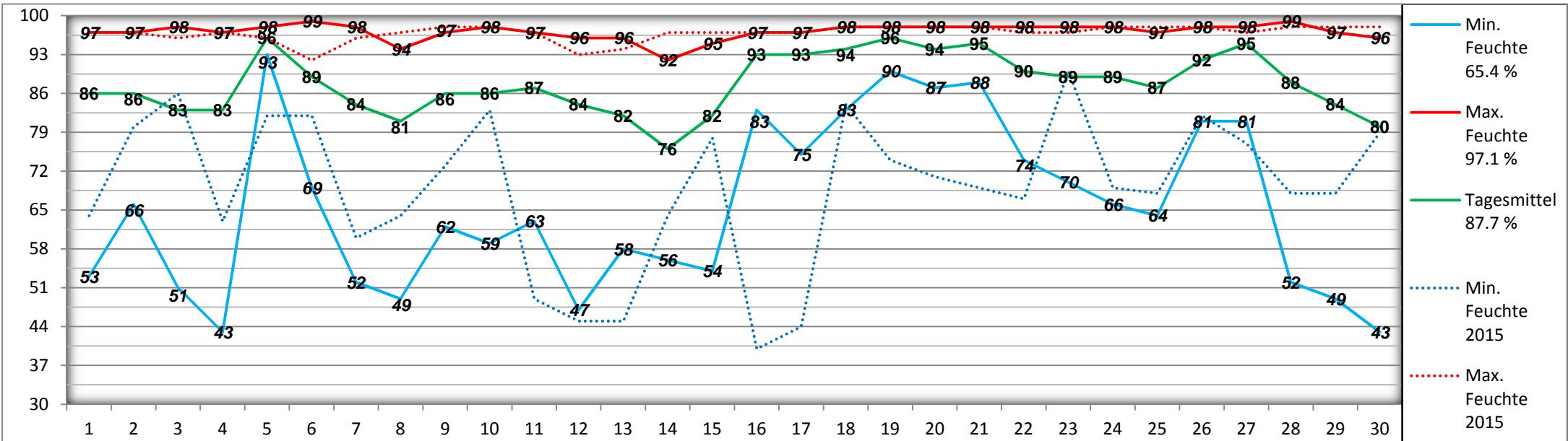
## Lufttemperatur °C (2 m über Boden)



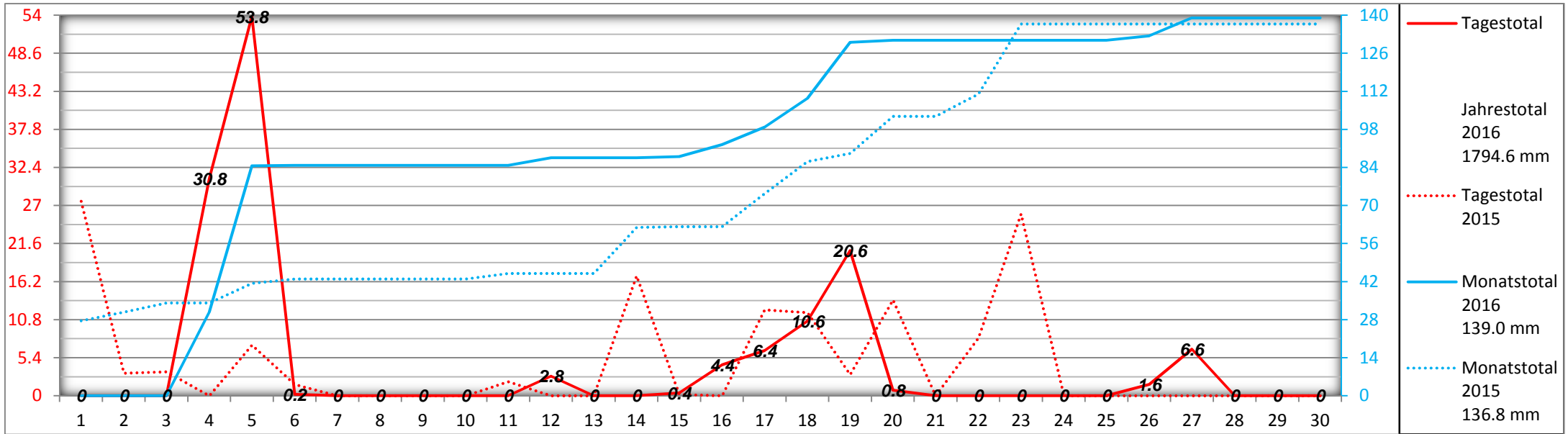
### Taupunkt °C ( 16 °C <= tüpig ) ( 2 m über Boden )



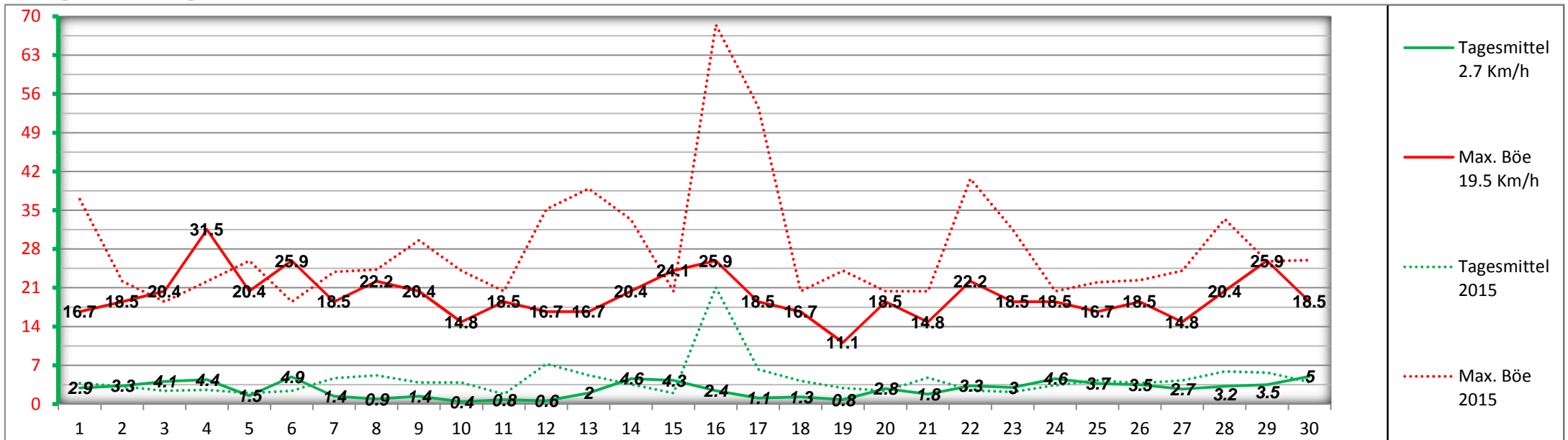
### Relative Luftfeuchtigkeit % ( 2 m über Boden )



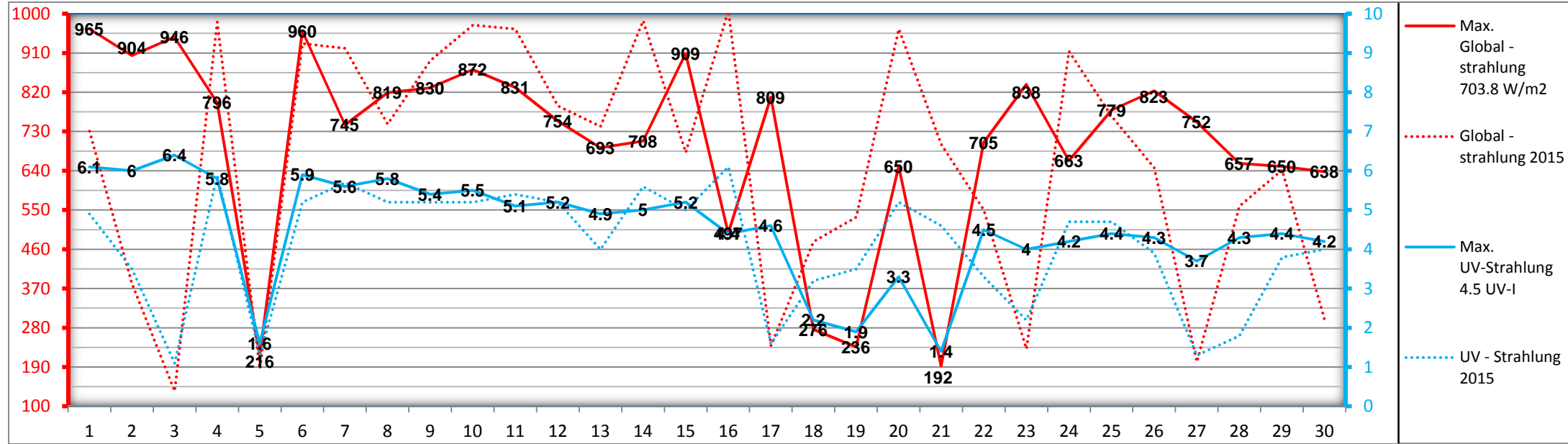
### Niederschlag mm (2 m über Boden)



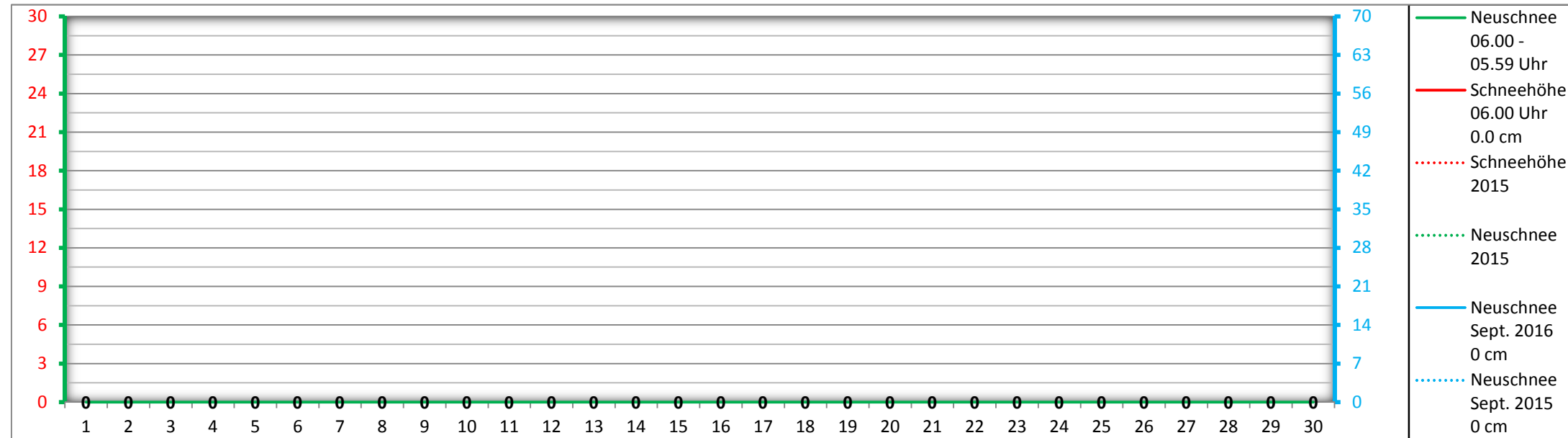
### Windgeschwindigkeit Km / h (6.8 m über Boden)



### Globalstrahlung W / m2 // UV –Strahlung UV - I ( 2 m über Boden )



### Schneehöhe cm



## Monatsübersicht September 2016

