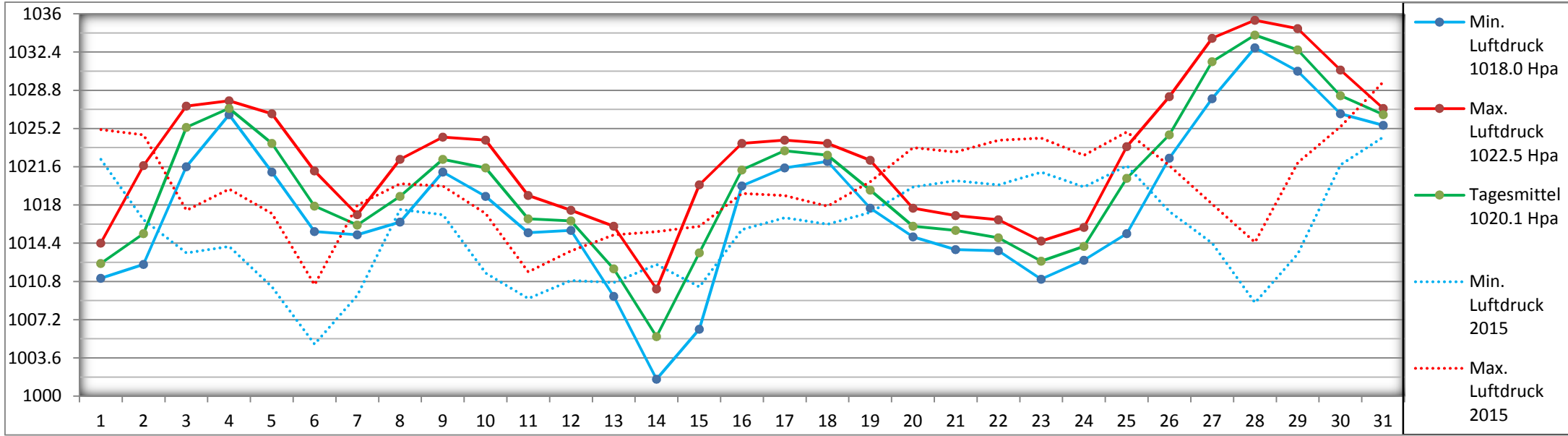
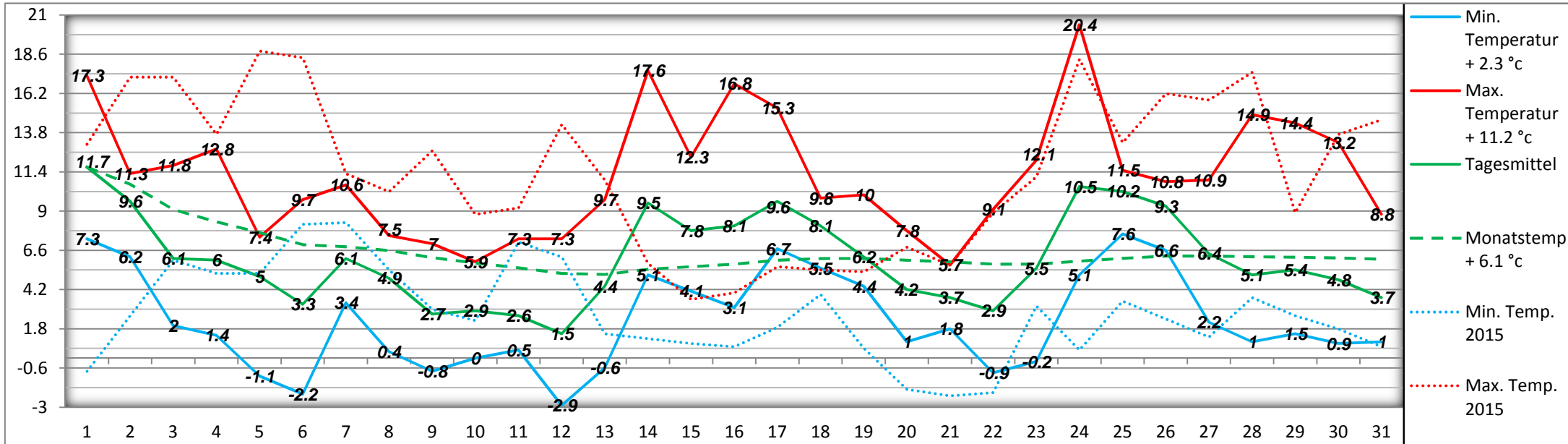


Luftdruck Hpa (bezogen auf die Meereshöhe)

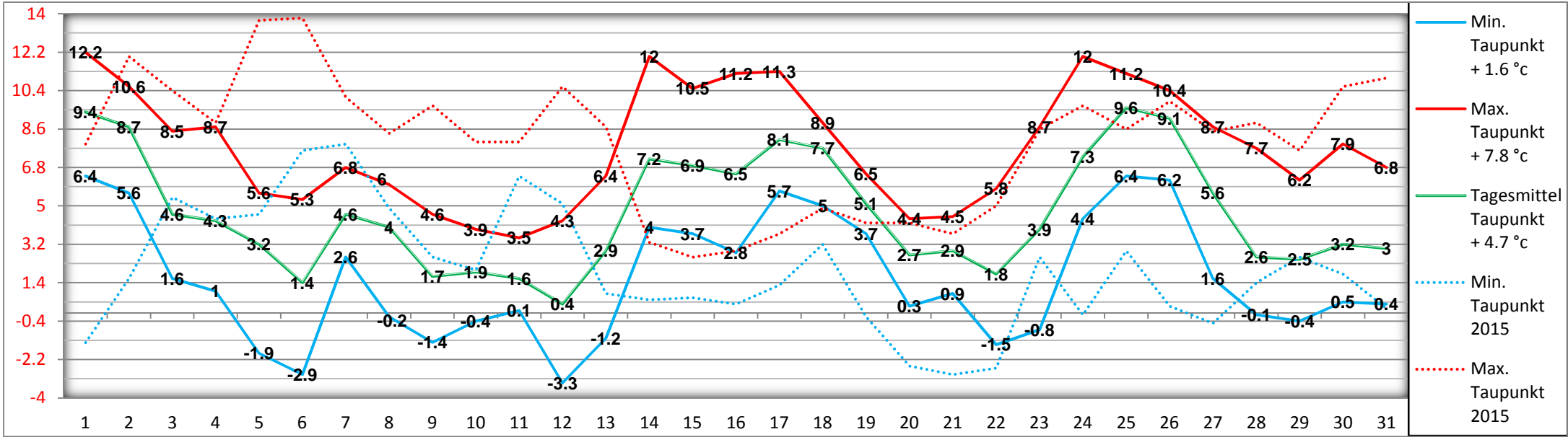
Oktober 2016



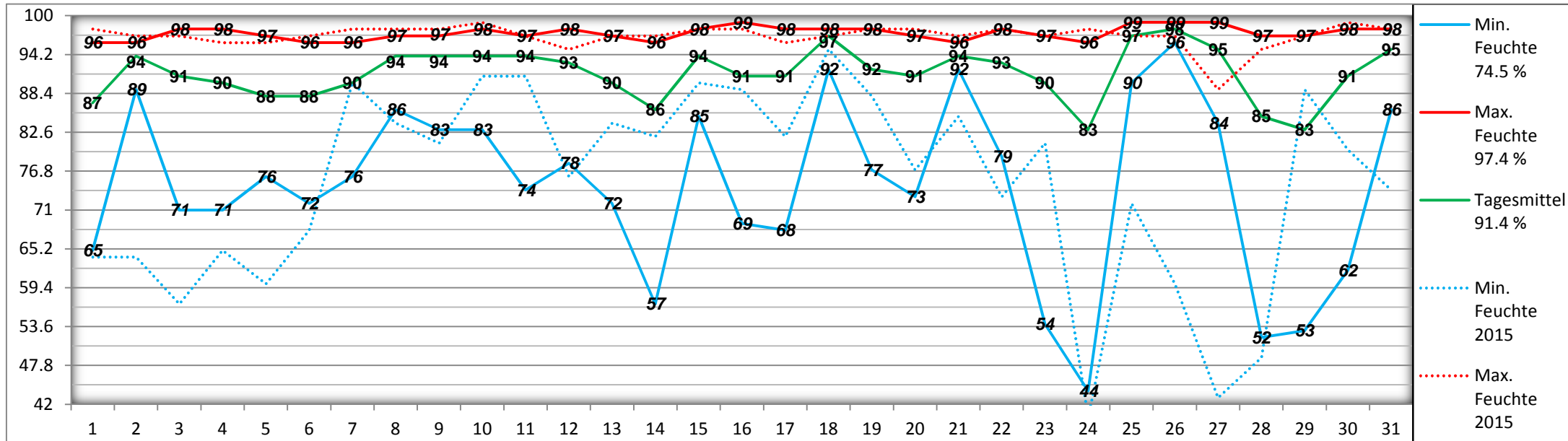
Lufttemperatur °C (2 m über Boden)



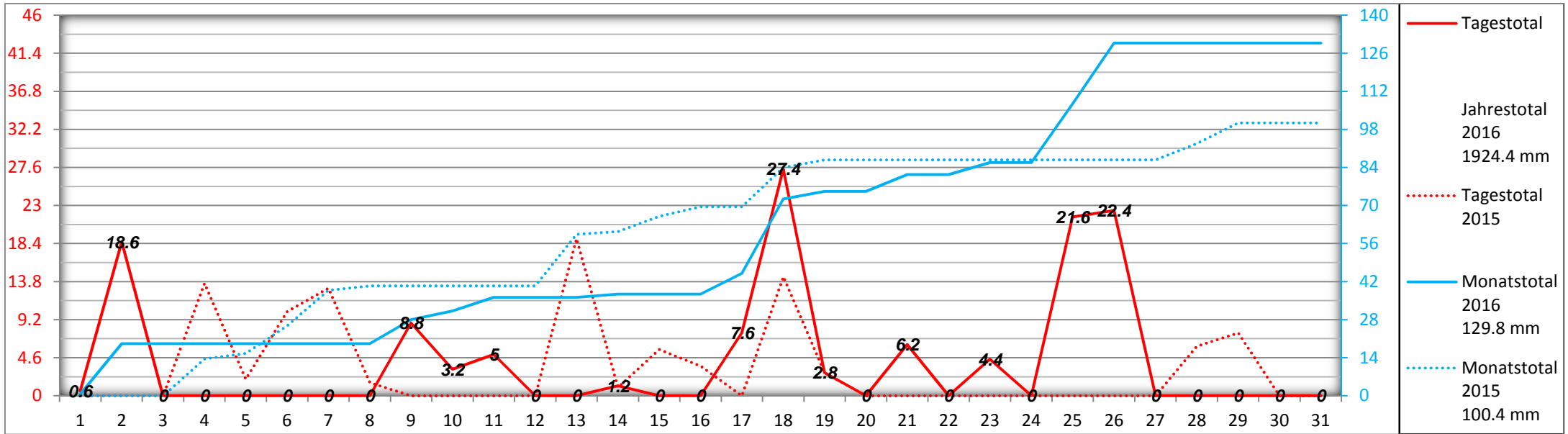
Taupunkt °C (16 °C < = tüpzig) (2 m über Boden)



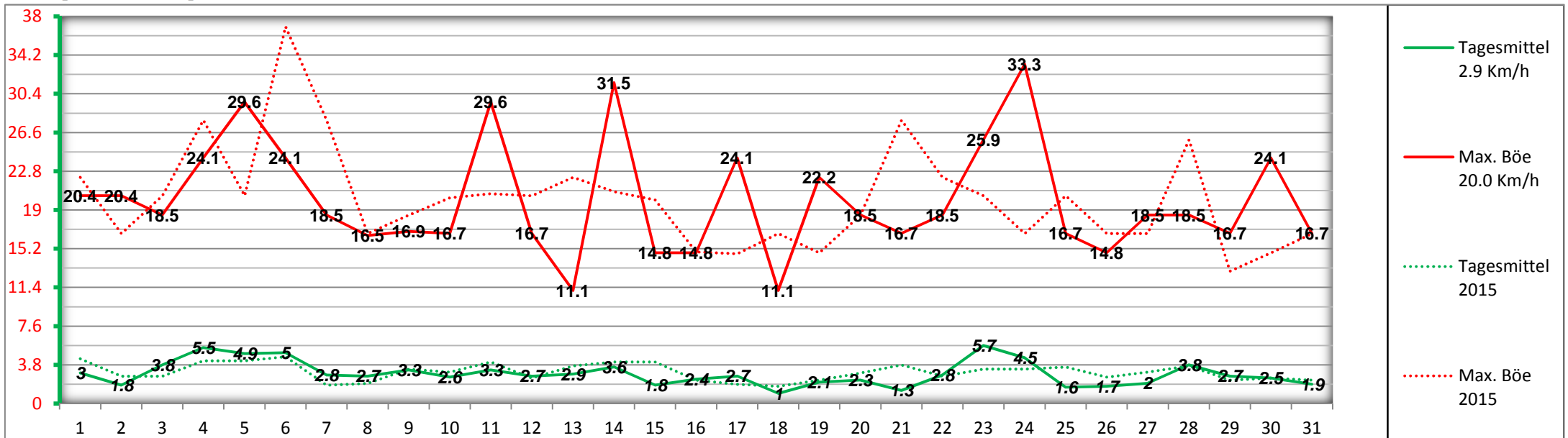
Relative Luftfeuchtigkeit % (2 m über Boden)



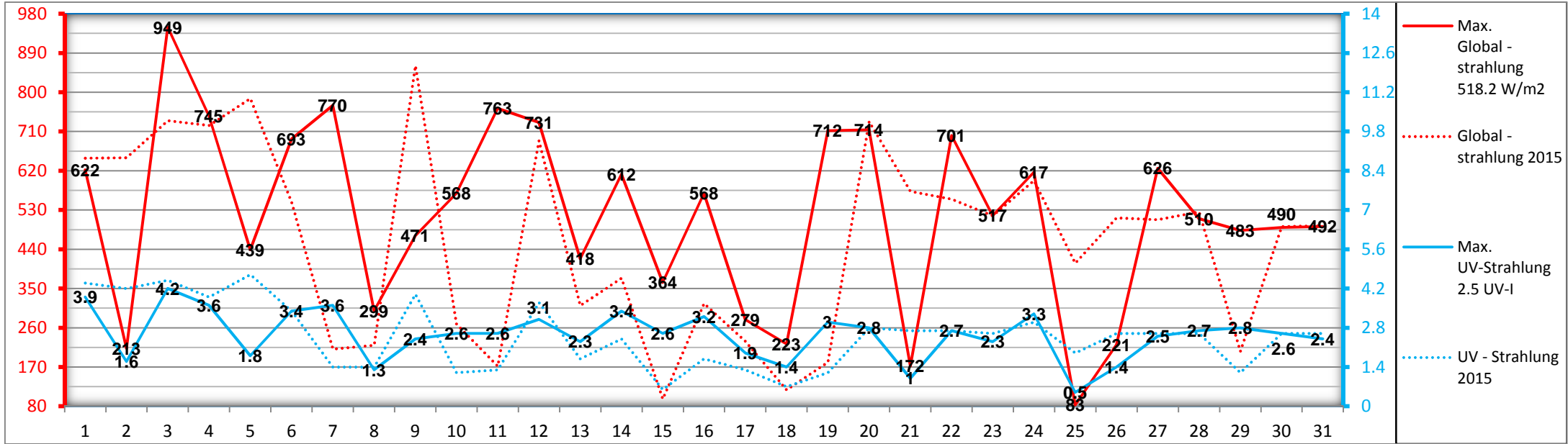
Niederschlag mm (2 m über Boden)



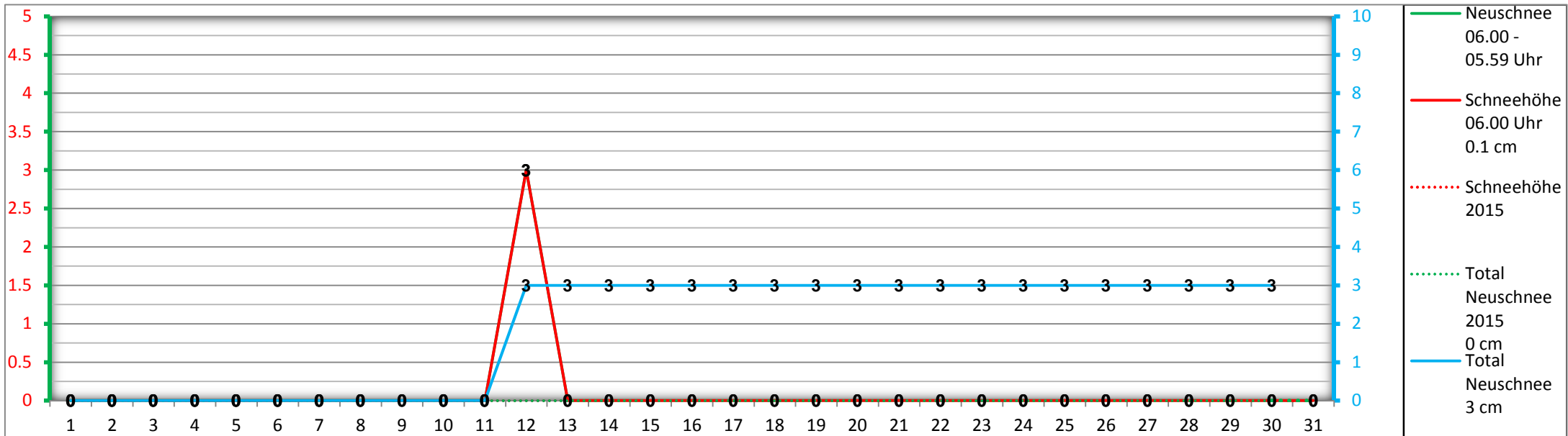
Windgeschwindigkeit Km / h (6.8 m über Boden)



Globalstrahlung W / m2 // UV -Strahlung UV - I (2 m über Boden)



Schneehöhe cm



Monatsübersicht Oktober 2016

