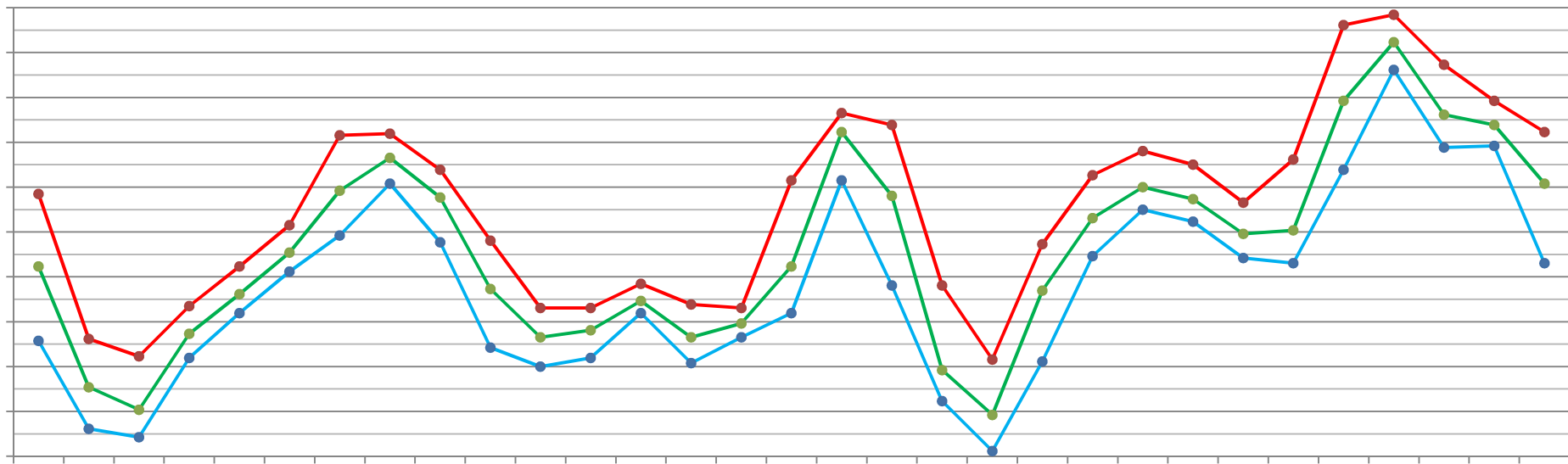


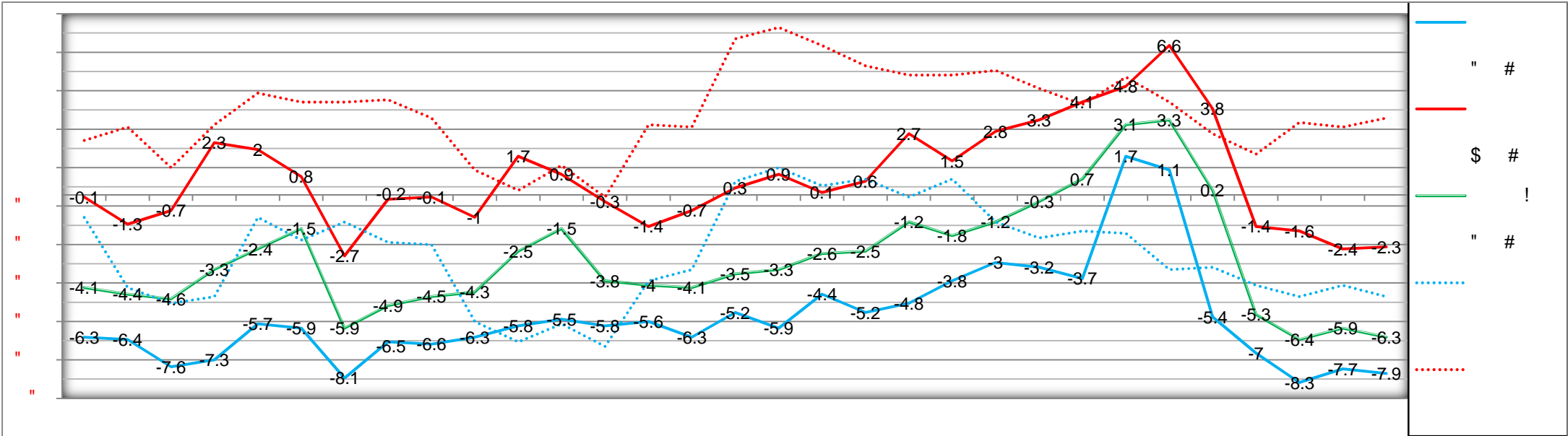
Luftdruck Hpa (bezogen auf die Meereshöhe)

Dezember 2016

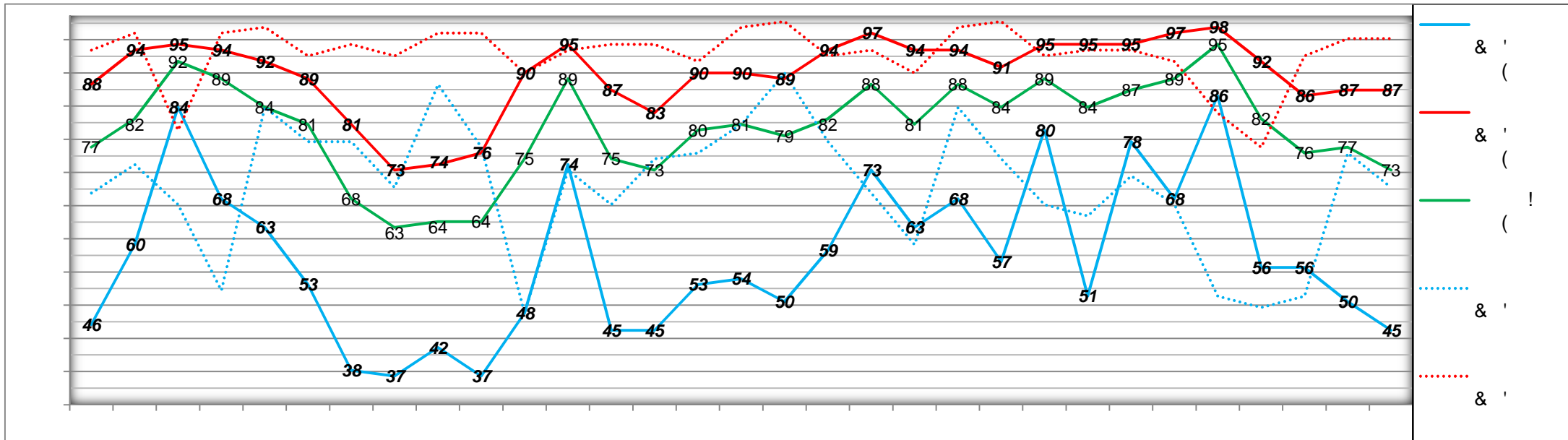


Lufttemperatur °C (2 m über Boden)

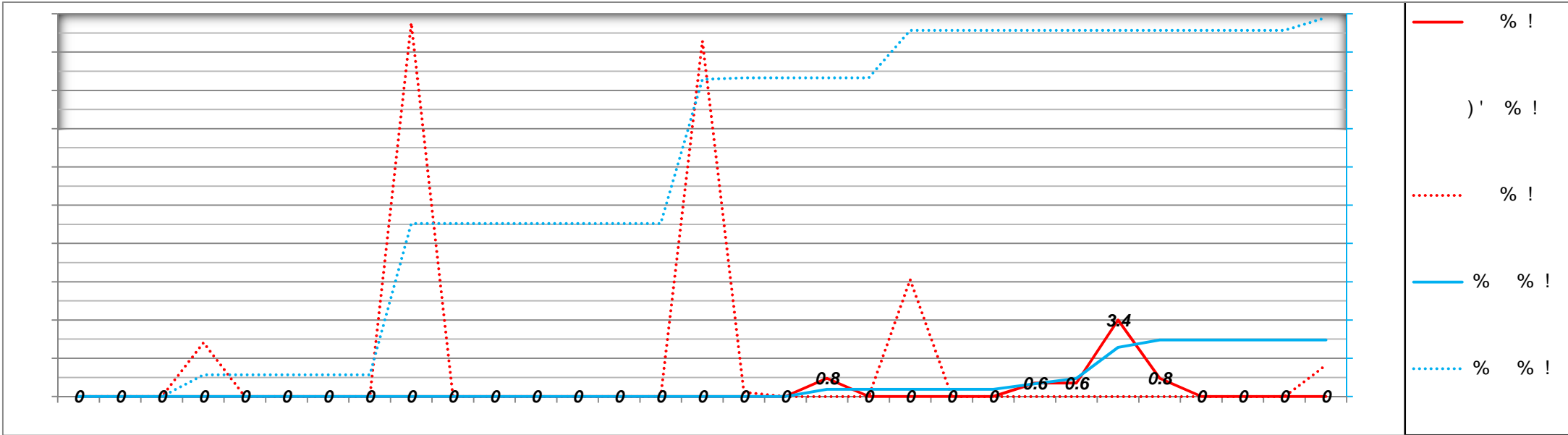
Taupunkt \sim °C (16 °C \leq tütig) (2 m über Boden)



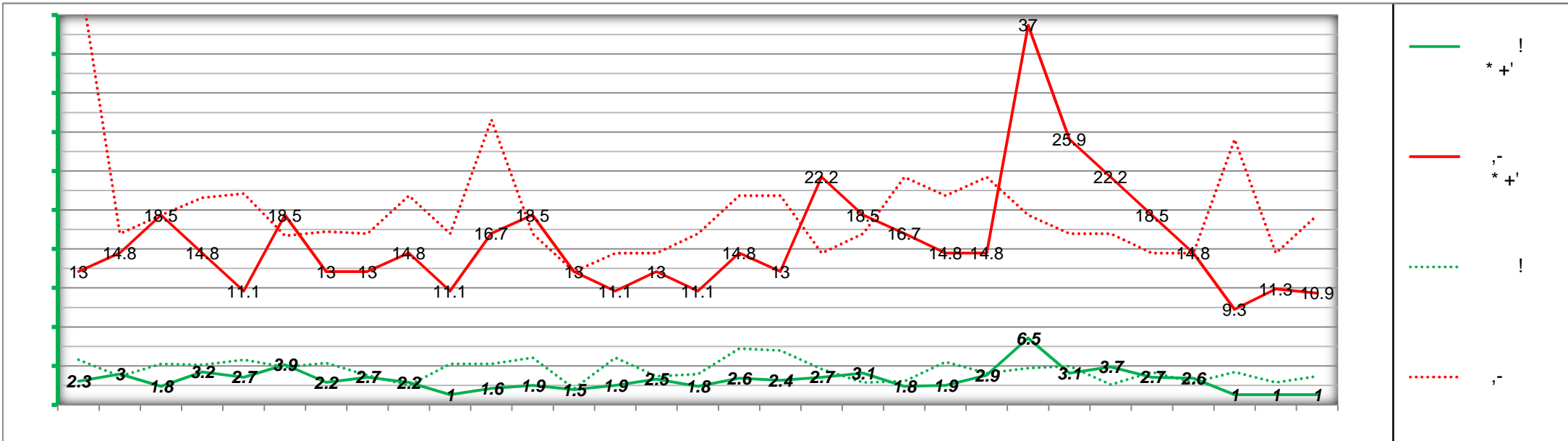
Relative Luftfeuchtigkeit % (2 m über Boden)



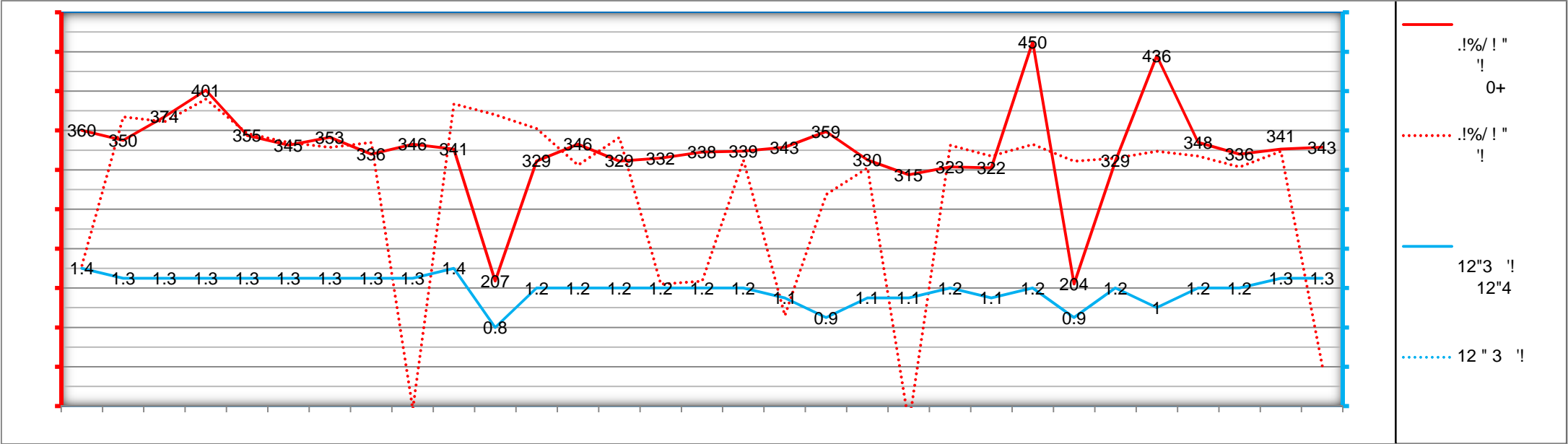
Niederschlag mm (2 m über Boden)



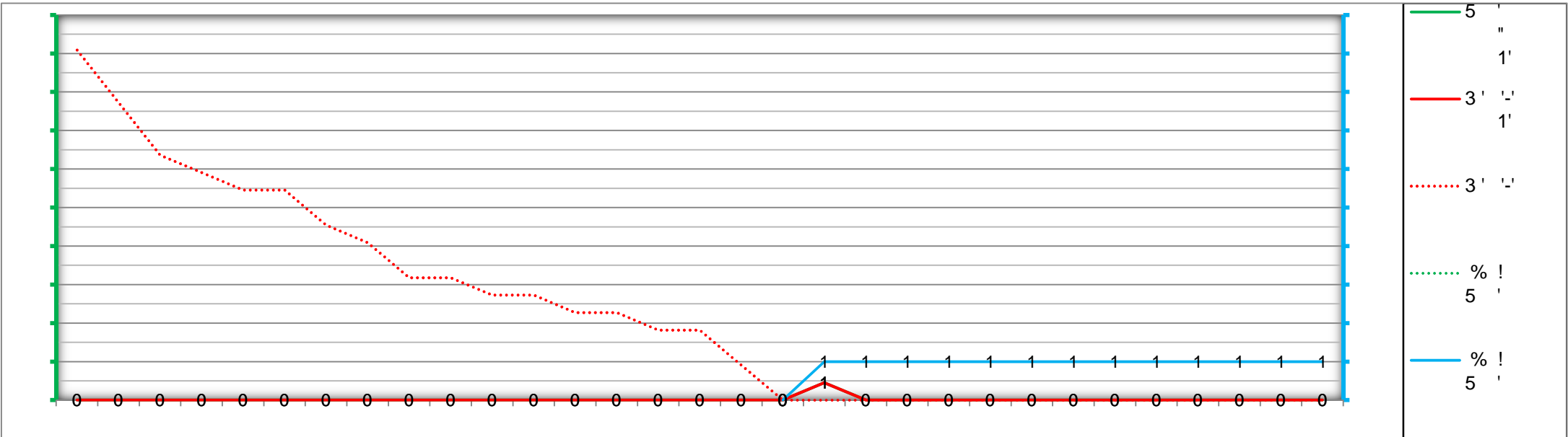
Windgeschwindigkeit Km/h (6.8 m über Boden)



Globalstrahlung W / m² // UV - Strahlung UV - I (2 m über Boden)



Schneehöhe cm



Monatsübersicht Dezember 2016

